

10-6535: Mouse Monoclonal Antibody to HLA-A (Center)(Clone: 7G7F9)(Discontinued)

Clonality :	Monoclonal
Clone Name :	7G7F9
Application :	WB
Reactivity :	Mouse
Gene :	HLA-A
Gene ID :	3105
Uniprot ID :	P04439
Format :	Purified
Alternative Name :	HLA class I histocompatibility antigen, A-3 alpha chain, MHC class I antigen A*3, HLA-A, HLAA
Isotype :	Mouse IgG1
Immunogen Information :	Synthetic Peptide

Description

HLA-A belongs to the HLA class I heavy chain paralogues. This class I molecule is a heterodimer consisting of a heavy chain and a light chain (beta-2 microglobulin). The heavy chain is anchored in the membrane. Class I molecules play a central role in the immune system by presenting peptides derived from the endoplasmic reticulum lumen. They are expressed in nearly all cells. The heavy chain is approximately 45 kDa and its gene contains 8 exons. Exon 1 encodes the leader peptide, exons 2 and 3 encode the alpha1 and alpha2 domains, which both bind the peptide, exon 4 encodes the alpha3 domain, exon 5 encodes the transmembrane region, and exons 6 and 7 encode the cytoplasmic tail. Polymorphisms within exon 2 and exon 3 are responsible for the peptide binding specificity of each class one molecule. Typing for these polymorphisms is routinely done for bone marrow and kidney transplantation. Hundreds of HLA-A alleles have been described.

Product Info

Amount :	80 µl / 400 µl
Purification :	Protein G Chromatography
Content :	Purified monoclonal antibody supplied in PBS with 0.09% (W/V) sodium azide.
Storage condition :	Maintain refrigerated at 2-8°C for up to 2 weeks. For long term store at -20°C in small aliquots to prevent freeze-thaw cycles.

Application Note

WB~1:100~250

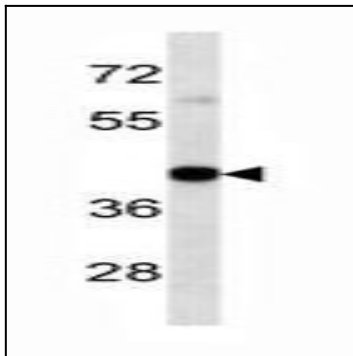


Figure 1: Western blot analysis of HLA-A Antibody (10-6535) in mouse Liver tissue lysates (35 $\frac{1}{4}$ g/lane). This demonstrates the HLA-A antibody detected the HLA-A protein.