

10-6531: Mouse Monoclonal Antibody to Rat Serpinh1 (Center)(Clone: 134CT3.1.1)(Discontinued)

Clonality :	Monoclonal
Clone Name :	134CT3.1.1
Application :	WB,IHC-P
Reactivity :	Human,Rat
Gene :	Serpinh1
Gene ID :	29345
Uniprot ID :	P29457
Format :	Purified
Alternative Name :	Serpin H1, 47 kDa heat shock protein, Collagen-binding protein, Colligin, GP46, Serpinh1, Cbp1, Hsp47
Isotype :	Mouse IgG1
Immunogen Information :	Synthetic Peptide

Product Info

Amount :	80 μ l / 400 μ l
Purification :	Protein G Chromatography
Content :	Purified monoclonal antibody supplied in PBS with 0.09% (W/V) sodium azide.
Storage condition :	Maintain refrigerated at 2-8°C for up to 2 weeks. For long term store at -20°C in small aliquots to prevent freeze-thaw cycles.

Application Note

WB~1:100~200|| IHC-P~1:50~100

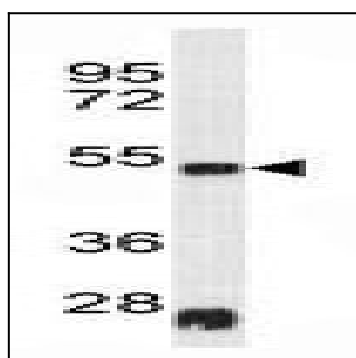


Figure 1: Western blot analysis of RAT SERPH Antibody (10-6531) in rat heart tissue lysates (35 μ g/lane). SERPH was detected using the purified Mab with dilution (1:100)

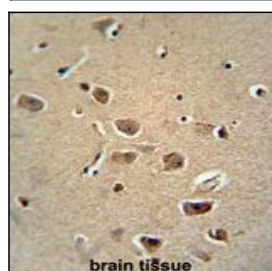


Figure 2: Immunohistochemistry analysis of RAT SERPH Monoclonal Antibody (10-6531) in formalin fixed and paraffin embedded human brain tissue followed by peroxidase conjugation of the secondary antibody and DAB staining. This data demonstrates the use of the RAT SERPH Monoclonal Antibody for immunohistochemistry. Clinical relevance has not been evaluated.