

## 10-6523: Mouse Monoclonal Antibody to LIN28A (Clone: 55CT58.12.1)(Discontinued)

<b>Clonality :</b>	Monoclonal
<b>Clone Name :</b>	55CT58.12.1
<b>Application :</b>	WB,IHC-P,IF
<b>Reactivity :</b>	Human
<b>Gene :</b>	LIN28A
<b>Gene ID :</b>	79727
<b>Uniprot ID :</b>	Q9H9Z2
<b>Format :</b>	Purified
<b>Alternative Name :</b>	Protein lin-28 homolog A, Lin-28A, Zinc finger CCHC domain-containing protein 1, LIN28A, CSDD1, LIN28, ZCCHC1
<b>Isotype :</b>	Mouse IgG1 Kappa
<b>Immunogen Information :</b>	Recombinant Protein

### Product Info

<b>Amount :</b>	80 µl / 400 µl
<b>Purification :</b>	Protein G Chromatography
<b>Content :</b>	Purified monoclonal antibody supplied in PBS with 0.09% (W/V) sodium azide.
<b>Storage condition :</b>	Maintain refrigerated at 2-8°C for up to 2 weeks. For long term store at -20°C in small aliquots to prevent freeze-thaw cycles.

### Application Note

WB~1:200~2000|| IHC-P~1:50~200|| IF~1:10~50

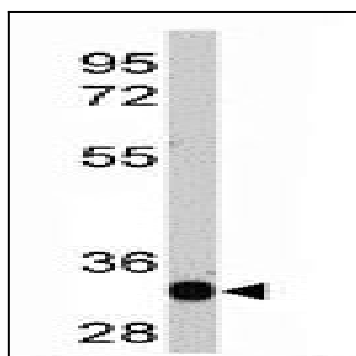


Figure 1: Western blot analysis of LIN28 recombinant protein by anti-LIN28A Monoclonal Antibody (10-6523). LIN28 was detected using the purified Mab.

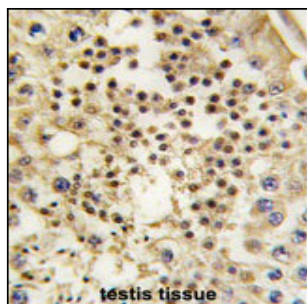


Figure 2: Formalin-fixed and paraffin-embedded human testis tissue reacted with LIN28A Monoclonal Antibody (10-6523), which was peroxidase-conjugated to the secondary antibody, followed by DAB staining. This data demonstrates the use of this antibody for immunohistochemistry; clinical relevance has not been evaluated.

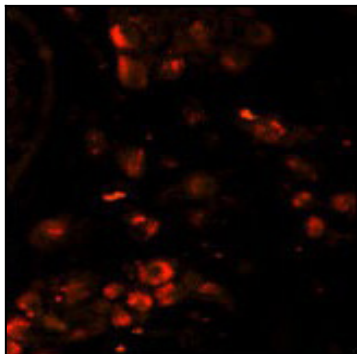


Figure 3: Immunofluorescence analysis of LIN28A Monoclonal Antibody (10-6523) with paraffin-embedded human testis tissue. 0.025 mg/ml primary antibody was followed by PE-conjugated goat anti-mouse IgG (whole molecule). PE emits orange fluorescence.