

## 10-6521: Mouse Monoclonal Antibody to SUMO3 (Clone: 76AT630.91.31)(Discontinued)

<b>Clonality :</b>	Monoclonal
<b>Clone Name :</b>	76AT630.91.31
<b>Application :</b>	WB
<b>Reactivity :</b>	Human
<b>Gene :</b>	SUMO3
<b>Gene ID :</b>	6612
<b>Uniprot ID :</b>	P55854
<b>Format :</b>	Purified
<b>Alternative Name :</b>	Small ubiquitin-related modifier 3, SUMO-3, SMT3 homolog 1 {ECO:0000312 HGNC:HGNC:11124}, SUMO-2, Ubiquitin-like protein SMT3A, Smt3A, SUMO3 ( <a href="#">HGNC:11124</a> )
<b>Isotype :</b>	Mouse IgG1
<b>Immunogen Information :</b>	Recombinant Protein

### Description

SUMO proteins, such as SUMO3, and ubiquitin (see MIM 191339) posttranslationally modify numerous cellular proteins and affect their metabolism and function. However, unlike ubiquitination, which targets proteins for degradation, sumoylation participates in a number of cellular processes, such as nuclear transport, transcriptional regulation, apoptosis, and protein stability (Su and Li, 2002 [PubMed 12383504]).

### Product Info

<b>Amount :</b>	80 µl / 400 µl
<b>Purification :</b>	Protein G Chromatography
<b>Content :</b>	Purified monoclonal antibody supplied in PBS with 0.09% (W/V) sodium azide.
<b>Storage condition :</b>	Maintain refrigerated at 2-8°C for up to 2 weeks. For long term store at -20°C in small aliquots to prevent freeze-thaw cycles.

### Application Note

WB~1:100~500

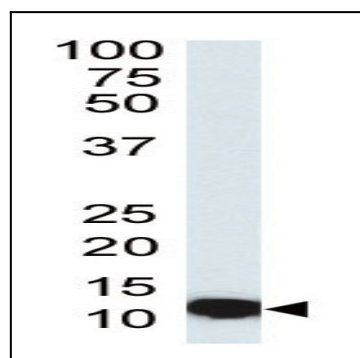


Figure 1: Western blot analysis of anti- SUMO3 Monoclonal Antibody (10-6521) in HL-60 cell line lysates (37ug/lane). SUMO3 was detected using the purified Mab.