

10-6520: Mouse Monoclonal Antibody to SUMO1 (Clone: 66AT1320)(Discontinued)

Clonality :	Monoclonal
Clone Name :	66AT1320
Application :	WB
Reactivity :	Human
Gene :	SUMO1
Gene ID :	7341
Uniprot ID :	P63165
Format :	Purified
Alternative Name :	Small ubiquitin-related modifier 1, SUMO-1, GAP-modifying protein 1, GMP1, SMT3 homolog 3, Sentrin, Ubiquitin-homology domain protein PIC1, Ubiquitin-like protein SMT3C, Smt3C, Ubiquitin-like protein UBL1, SUMO1, SMT3C, SMT3H3, UBL1
Isotype :	Mouse IgG1

Description

This gene encodes a protein that is a member of the SUMO (small ubiquitin-like modifier) protein family. It functions in a manner similar to ubiquitin in that it is bound to target proteins as part of a post-translational modification system. However, unlike ubiquitin which targets proteins for degradation, this protein is involved in a variety of cellular processes, such as nuclear transport, transcriptional regulation, apoptosis, and protein stability. It is not active until the last four amino acids of the carboxy-terminus have been cleaved off. Several pseudogenes have been reported for this gene. Alternate transcriptional splice variants encoding different isoforms have been characterized.

Product Info

Amount :	80 μ l / 400 μ l
Purification :	Protein G Chromatography
Content :	Purified monoclonal antibody supplied in PBS with 0.09% (W/V) sodium azide.
Storage condition :	Maintain refrigerated at 2-8°C for up to 2 weeks. For long term store at -20°C in small aliquots to prevent freeze-thaw cycles.

Application Note

WB~1:100~500

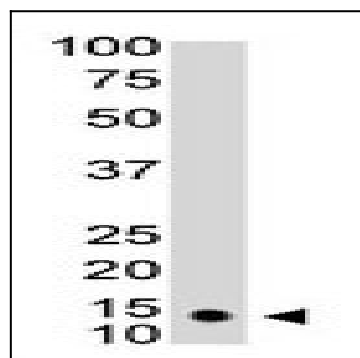


Figure 1: The anti-SUMO1 monoclonal antibody(10-6520) is used in Western blot to detect SUMO1 in HL60 cell lysate.