

## 10-6515: Mouse Monoclonal Antibody to GLT (Clone: 24CT661.4.3)(Discontinued)

<b>Clonality :</b>	Monoclonal
<b>Clone Name :</b>	24CT661.4.3
<b>Application :</b>	WB
<b>Reactivity :</b>	Human
<b>Gene :</b>	LGALS1
<b>Gene ID :</b>	3956
<b>Uniprot ID :</b>	P09382
<b>Format :</b>	Ascites
<b>Alternative Name :</b>	Galectin-1, Gal-1, 14 kDa laminin-binding protein, HLBP14, 14 kDa lectin, Beta-galactoside-binding lectin L-14-I, Galaptin, HBL, HPL, Lactose-binding lectin 1, Lectin galactoside-binding soluble 1, Putative MAPK-activating protein PM12, S-Lac lectin 1, LGALS1
<b>Isotype :</b>	Mouse IgG1
<b>Immunogen Information :</b>	Recombinant Protein

### Description

The galectins are a family of beta-galactoside-binding proteins implicated in modulating cell-cell and cell-matrix interactions. This gene product may act as an autocrine negative growth factor that regulates cell proliferation.

### Product Info

<b>Amount :</b>	0.1 ml
<b>Content :</b>	Mouse monoclonal antibody supplied in crude ascites with 0.09% (W/V) sodium azide.
<b>Storage condition :</b>	Maintain refrigerated at 2-8°C for up to 2 weeks. For long term store at -20°C in small aliquots to prevent freeze-thaw cycles.

### Application Note

WB~1:1000

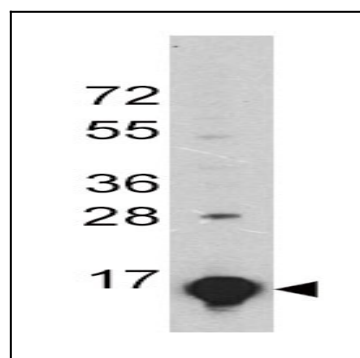


Figure 1: Western blot analysis of GLT Monoclonal Antibody (10-6515) in A375 cell line lysates. GLT was detected using the ascites Mab with dilution 1:1000.