

## 10-6514: Mouse Monoclonal Antibody to Phospho-PLM(S68) (Clone: 41AT858.235)(Discontinued)

<b>Clonality :</b>	Monoclonal
<b>Clone Name :</b>	41AT858.235
<b>Application :</b>	WB
<b>Reactivity :</b>	Mouse
<b>Gene :</b>	Fxyd1
<b>Gene ID :</b>	56188
<b>Uniprot ID :</b>	Q9Z239
<b>Format :</b>	Purified
<b>Alternative Name :</b>	Phospholemman, FXYP domain-containing ion transport regulator 1, Fxyd1, Plm
<b>Isotype :</b>	Mouse IgG1
<b>Immunogen Information :</b>	Synthetic Peptide

### Description

This gene encodes a member of the FXYP family of small membrane proteins that share a 35-amino acid signature sequence domain, beginning with the sequence PFXYP and containing 7 invariant and 6 highly conserved amino acids. The protein encoded by this gene is a plasma membrane substrate for several kinases, including protein kinase A, protein kinase C, NIMA kinase, and myotonic dystrophy kinase. It is thought to form an ion channel or regulate ion channel activity and act as an accessory protein of Na,K-ATPase. Alternatively spliced transcript variants have been described.

### Product Info

<b>Amount :</b>	80 $\mu$ l / 400 $\mu$ l
<b>Purification :</b>	Protein G Chromatography
<b>Content :</b>	Purified monoclonal antibody supplied in PBS with 0.09% (W/V) sodium azide.
<b>Storage condition :</b>	Maintain refrigerated at 2-8°C for up to 2 weeks. For long term store at -20°C in small aliquots to prevent freeze-thaw cycles.

### Application Note

WB~1:100~500

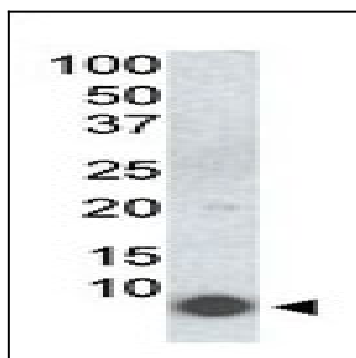


Figure 1: Western blot analysis of anti-PLM Mab (10-6514) in 293 cells transfected with a plasmid encoding PLM.