

10-6508: Mouse Monoclonal Antibody to Beta-actin (Clone: 8H10D10)(Discontinued)

Clonality :	Monoclonal
Clone Name :	8H10D10
Application :	WB,IHC-P
Reactivity :	Human,Mouse,Rat
Gene :	ACTB
Gene ID :	60
Uniprot ID :	P60709
Format :	Purified
Alternative Name :	Actin, cytoplasmic 1, Beta-actin, Actin, cytoplasmic 1, N-terminally processed, ACTB
Isotype :	Mouse IgG

Description

This gene encodes one of six different actin proteins. Actins are highly conserved proteins that are involved in cell motility, structure, and integrity. This actin is a major constituent of the contractile apparatus and one of the two nonmuscle cytoskeletal actins.

Product Info

Amount :	80 µl / 400 µl
Purification :	Protein G Chromatography
Content :	Purified monoclonal antibody supplied in PBS with 0.09% (W/V) sodium azide.
Storage condition :	Maintain refrigerated at 2-8°C for up to 2 weeks. For long term store at -20°C in small aliquots to prevent freeze-thaw cycles.

Application Note

WB~1:1000|| IHC-P~1:25

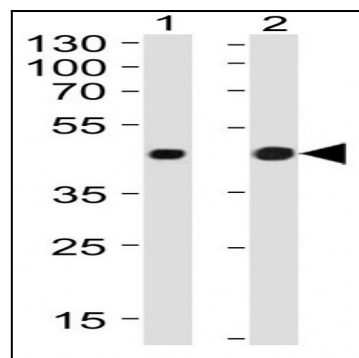


Figure 1: Western blot analysis of Beta-actin Antibody (10-6508) in lane 1: HepG2 cell line and lane 2: HL-60 cell line. Beta-actin Antibody was diluted at 1:1000 at each lane. A goat anti-mouse IgG H&L (HRP) at 1:10000 dilution was used as the secondary antibody. Lysates at 20 $\frac{1}{4}$ g per lane.

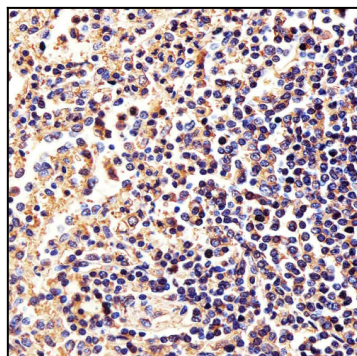


Figure 2: Immunohistochemical analysis of paraffin-embedded h spleen section using Beta-actin Antibody (10-6508). Beta-actin Antibody was diluted at 1:25 dilution. A peroxidase-conjugated goat anti-rabbit IgG at 1:400 dilution was used as the secondary antibody, followed by DAB staining.

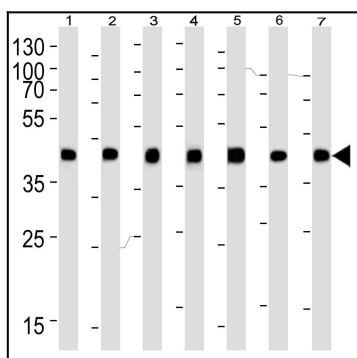


Figure 3: Western blot analysis of Beta-actin Antibody (10-6508) in lane 1: HepG2 cell line lane 2: HL-60 cell line, lane 3: mouse NIH/3T3 cell line, lane 4: mouse cerebellum, lane 5: rat stomach tissue lysate, lane 6: CHO and lane 7: COS-7 cell line. Beta-actin Antibody was diluted at 1:1000 at each lane. A goat anti-mouse IgG H&L(HRP) at 1:3000 dilution was used as the secondary antibody. Lysates at 35 $\frac{1}{4}$ g per lane.

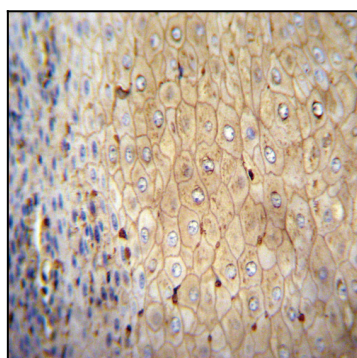


Figure 4: Immunohistochemical analysis of paraffin-embedded h spleen section using Beta-actin Antibody (10-6508). Beta-actin Antibody was diluted at 1:25 dilution. A peroxidase-conjugated goat anti-mouse IgG at 1:400 dilution was used as the secondary antibody, followed by DAB staining.