

10-9641: Recombinant Rabbit Monoclonal Antibody to CK20 (Cytokeratin-20) (Clone: RM283)(Discontinued)

Clonality :	Monoclonal
Clone Name :	RM283
Application :	WB, IHC
Reactivity :	Human
Gene :	KRT20
Gene ID :	54474
Uniprot ID :	P35900
Format :	Purified
Alternative Name :	KRT20
Isotype :	Rabbit IgG
Immunogen Information :	A peptide corresponding to the C-terminus of human Cytokeratin-20.

Product Info

Amount :	100 μ l
Purification :	Protein A affinity purified from an animal origin-free culture supernatant
Content :	Antibody in 50% Glycerol/PBS with 1% BSA and 0.09% sodium azide
Storage condition :	Store at -20°C. Avoid repeated freeze and thaw cycles.

Application Note

Clone RM283 reacts to human CK20 (Cytokeratin-20). Immunohistochemistry (IHC): 1:100-1:250 dilution; Western Blot (WB): 1:1000-1:2000 dilution.

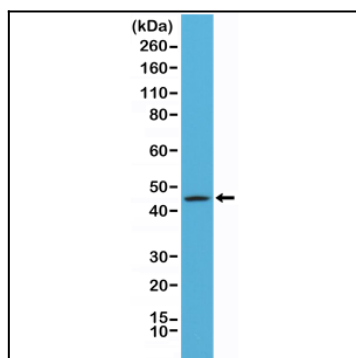


Figure 1: Western Blot of A431 cells lysates using Anti-CK20 Rabbit Monoclonal Antibody (Clone: RM283) at a 1:1000 dilution.