

## 10-9640: Recombinant Rabbit Monoclonal Antibody to GFAP (C-Terminal) (Clone: RM282)(Discontinued)

<b>Clonality :</b>	Monoclonal
<b>Clone Name :</b>	RM282
<b>Application :</b>	WB, IHC
<b>Reactivity :</b>	Human, Mouse
<b>Gene :</b>	GFAP
<b>Gene ID :</b>	2670
<b>Uniprot ID :</b>	P14136
<b>Format :</b>	Purified
<b>Alternative Name :</b>	GFAP
<b>Isotype :</b>	Rabbit IgG
<b>Immunogen Information :</b>	A peptide corresponding to the C-terminus of human GFAP.

### Product Info

<b>Amount :</b>	100 $\mu$ l
<b>Purification :</b>	Protein A affinity purified from an animal origin-free culture supernatant
<b>Content :</b>	Antibody in 50% Glycerol/PBS with 1% BSA and 0.09% sodium azide
<b>Storage condition :</b>	Store at -20°C. Avoid repeated freeze and thaw cycles.

### Application Note

Clone RM282 reacts to human and mouse GFAP C-teClone RMinal (Glial fibrillary acidic protein). Immunohistochemistry (IHC): 1:100-1:200 dilution; Western Blot (WB): 1:1000-1:2000 dilution.

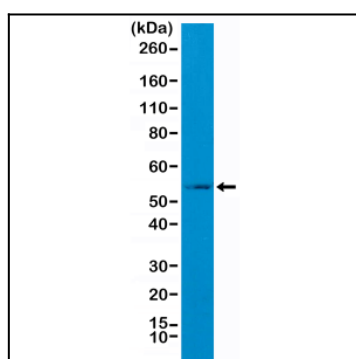


Figure 1: Western Blot of mouse brain tissue lysate, using Anti-GFAP Clone: RM282 at a 1:1000 dilution.