

## 10-9639: Recombinant Rabbit Monoclonal Antibody to Cyclin B1 (Clone: RM281)(Discontinued)

|                                |                                       |
|--------------------------------|---------------------------------------|
| <b>Clonality :</b>             | Monoclonal                            |
| <b>Clone Name :</b>            | RM281                                 |
| <b>Application :</b>           | WB, IHC                               |
| <b>Reactivity :</b>            | Human                                 |
| <b>Gene :</b>                  | CCNB1                                 |
| <b>Gene ID :</b>               | 891                                   |
| <b>Uniprot ID :</b>            | P14635                                |
| <b>Format :</b>                | Purified                              |
| <b>Alternative Name :</b>      | CCNB1, CCNB                           |
| <b>Isotype :</b>               | Rabbit IgG                            |
| <b>Immunogen Information :</b> | A peptide corresponding to Cyclin B1. |

### Product Info

|                            |  |
|----------------------------|--|
| <b>Amount :</b>            | 100 $\mu$ l  |
| <b>Purification :</b>      | Protein A affinity purified from an animal origin-free culture supernatant |
| <b>Content :</b>           | Antibody in 50% Glycerol/PBS with 1% BSA and 0.09% sodium azide            |
| <b>Storage condition :</b> | Store at -20°C. Avoid repeated freeze and thaw cycles.                     |

### Application Note

Clone RM281 reacts to human Cyclin B1. Immunohistochemistry (IHC): 1:1000-1:2000 dilution; Western Blot (WB): 1:1000-1:2000 dilution.

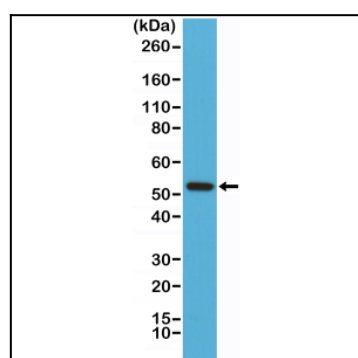


Figure 1: Western Blot of Jurkat cell lysates using Anti-Cyclin B1 Rabbit Monoclonal Antibody (Clone: RM281) at a 1:1000 dilution.