

## 10-9638: Recombinant Rabbit Monoclonal Antibody to Neurofilament-L (NF-L) (Clone: RM280)(Discontinued)

<b>Clonality :</b>	Monoclonal
<b>Clone Name :</b>	RM280
<b>Application :</b>	WB, IHC
<b>Reactivity :</b>	Human
<b>Gene :</b>	NEFL
<b>Gene ID :</b>	4747
<b>Uniprot ID :</b>	P07196
<b>Format :</b>	Purified
<b>Alternative Name :</b>	NEFL, NF68, NFL
<b>Isotype :</b>	Rabbit IgG
<b>Immunogen Information :</b>	A peptide corresponding to the C-terminus of human Neurofilament-L (NF-L)

### Product Info

<b>Amount :</b>	100 $\mu$ l
<b>Purification :</b>	Protein A affinity purified from an animal origin-free culture supernatant
<b>Content :</b>	Antibody in 50% Glycerol/PBS with 1% BSA and 0.09% sodium azide
<b>Storage condition :</b>	Store at -20°C. Avoid repeated freeze and thaw cycles.

### Application Note

Clone RM280 reacts to human Neurofilament-L (NF-L). Immunohistochemistry (IHC): 1:1000-1:2500 dilution; Western Blot (WB): 1:1000-1:2500 dilution.

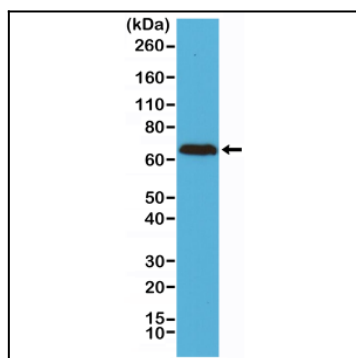


Figure 1: Western Blot of human brain tissue lysates using Anti-Neurofilament-L (NF-L) Rabbit Monoclonal Antibody (Clone: RM280) at a 1:2500 dilution.