

## 10-9637: Recombinant Rabbit Monoclonal Antibody to CK18 (Cytokeratin-18) (Clone: RM279)(Discontinued)

<b>Clonality :</b>	Monoclonal
<b>Clone Name :</b>	RM279
<b>Application :</b>	WB, IHC
<b>Reactivity :</b>	Human
<b>Gene :</b>	KRT18
<b>Gene ID :</b>	3875
<b>Uniprot ID :</b>	P05783
<b>Format :</b>	Purified
<b>Alternative Name :</b>	KRT18, CYK18, PIG46
<b>Isotype :</b>	Rabbit IgG
<b>Immunogen Information :</b>	A peptide corresponding to the N-terminus of human Cytokeratin-18.

### Product Info

<b>Amount :</b>	100 µl
<b>Purification :</b>	Protein A affinity purified from an animal origin-free culture supernatant
<b>Content :</b>	Antibody in 50% Glycerol/PBS with 1% BSA and 0.09% sodium azide
<b>Storage condition :</b>	Store at -20°C. Avoid repeated freeze and thaw cycles.

### Application Note

Clone RM279 reacts to human CK18 (Cytokeratin-18). Immunohistochemistry (IHC): 1:1000-1:4000 dilution; Western Blot (WB): 1:1000-1:2000 dilution.

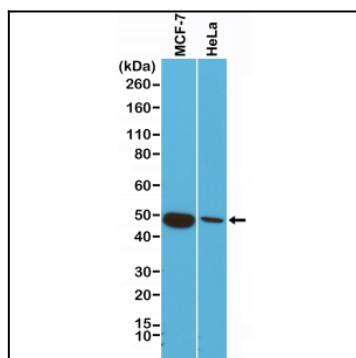


Figure 1: Western Blot of MCF-7 and HeLa cells lysates using Anti-CK18 Rabbit Monoclonal Antibody (Clone: RM279) at a 1:1000 dilution.