

## 10-9635: Recombinant Rabbit Monoclonal Antibody to Smad4 (Clone: RM277)(Discontinued)

<b>Clonality :</b>	Monoclonal
<b>Clone Name :</b>	RM277
<b>Application :</b>	WB, IHC
<b>Reactivity :</b>	Human, Mouse, Rat
<b>Gene :</b>	SMAD4
<b>Gene ID :</b>	4089
<b>Uniprot ID :</b>	Q13485
<b>Format :</b>	Purified
<b>Alternative Name :</b>	SMAD4, DPC4, MADH4
<b>Isotype :</b>	Rabbit IgG
<b>Immunogen Information :</b>	A peptide corresponding to the C-terminus of human Smad4.

### Product Info

<b>Amount :</b>	100 $\mu$ l
<b>Purification :</b>	Protein A affinity purified from an animal origin-free culture supernatant
<b>Content :</b>	Antibody in 50% Glycerol/PBS with 1% BSA and 0.09% sodium azide
<b>Storage condition :</b>	Store at -20°C. Avoid repeated freeze and thaw cycles.

### Application Note

Clone RM277 reacts to human Smad4. This antibody may also react to mouse or rat Smad4, as predicted by immunogen homology. Immunohistochemistry (IHC): 1:1000-1:2000 dilution; Western Blot (WB): 1:500-1:1000 dilution.

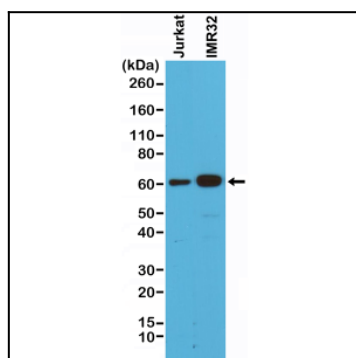


Figure 1: Western Blot of Jurkat and IMR32 cells lysates using Anti-Smad4 Rabbit Monoclonal Antibody (Clone: RM277) at a 1:500 dilution.