

10-9634: Recombinant Rabbit Monoclonal Antibody to Beta-Catenin 1 (CTNNB1) (Clone: RM276)(Discontinued)

Clonality :	Monoclonal
Clone Name :	RM276
Application :	IHC,WB
Reactivity :	Rat,Human
Gene :	CTNNB1
Gene ID :	1499
Uniprot ID :	P35222
Format :	Purified
Alternative Name :	CTNNB1, CTNNB, OK/SW-cl.35, PRO2286
Isotype :	Rabbit IgG
Immunogen Information :	A peptide corresponding to human Beta-Catenin.

Product Info

Amount :	100 µl
Purification :	Protein A affinity purified from an animal origin-free culture supernatant
Content :	Antibody in 50% Glycerol/PBS with 1% BSA and 0.09% sodium azide
Storage condition :	Store at -20°C. Avoid repeated freeze and thaw cycles.

Application Note

Clone RM276 reacts to human Beta-Catenin (Catenin beta-1). This antibody may also react to mouse or rat Beta-Catenin, as predicted by immunogen homology. Immunohistochemistry (IHC): 1:500-1:1000 dilution; Western Blot (WB): 1:400-1:1000 dilution.

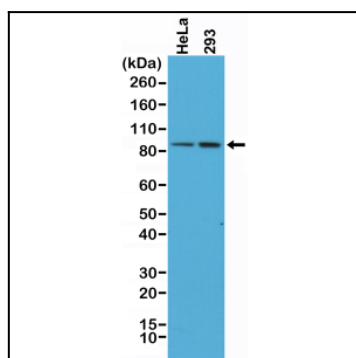


Figure 1: Western Blot of HeLa and 293 cells lysates using Anti- Beta -Catenin Rabbit Monoclonal Antibody (Clone: RM276) at a 1:400 dilution.

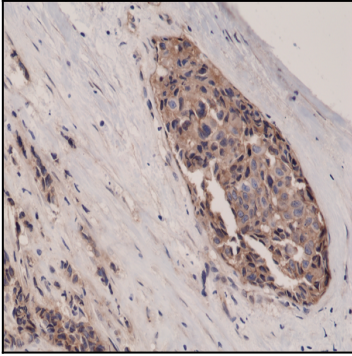


Figure-2: Immunohistochemical staining of formalin fixed and paraffin embedded human breast cancer tissue sections using Anti-β²-Catenin Rabbit Monoclonal Antibody (Clone RM276) at a 1:1000 dilution.