

10-9633: Recombinant Rabbit Monoclonal Antibody to JAM1 (Clone: RM275)(Discontinued)

Clonality :	Monoclonal
Clone Name :	RM275
Application :	WB
Reactivity :	Human
Gene :	F11R
Gene ID :	50848
Uniprot ID :	Q9Y624
Format :	Purified
Alternative Name :	F11R, JAM1, JCAM, UNQ264/PRO301
Isotype :	Rabbit IgG
Immunogen Information :	A peptide corresponding to the N-terminus of human JAM1 (Junctional adhesion molecule 1).

Product Info

Amount :	100 μ l
Purification :	Protein A affinity purified from an animal origin-free culture supernatant
Content :	Antibody in 50% Glycerol/PBS with 1% BSA and 0.09% sodium azide
Storage condition :	Store at -20°C. Avoid repeated freeze and thaw cycles.

Application Note

Clone RM275 reacts to human JAM1 (Junctional adhesion molecule 1). Immunohistochemistry (IHC): 1:2000-1:10000 dilution; Western Blot (WB): 1:250-1:1000 dilution.

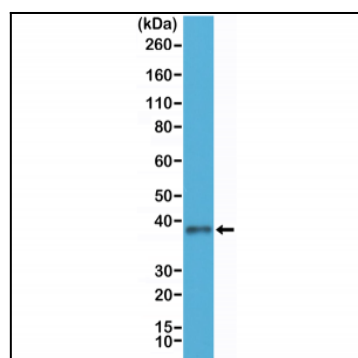


Figure 1: Western Blot of HEK293 cells lysates using Anti-JAM1 Rabbit Monoclonal Antibody (Clone: RM275) at a 1:250 dilution.