

10-9630: Recombinant Rabbit Monoclonal Antibody to CD20 (Clone: RM272)(Discontinued)

Clonality :	Monoclonal
Clone Name :	RM272
Application :	WB, IHC
Reactivity :	Human
Gene :	MS4A1
Gene ID :	931
Uniprot ID :	P11836
Format :	Purified
Alternative Name :	MS4A1, CD20
Isotype :	Rabbit IgG
Immunogen Information :	A peptide corresponding to the C-terminus of human CD20

Product Info

Amount :	100 μ l
Purification :	Protein A affinity purified from an animal origin-free culture supernatant
Content :	Antibody in 50% Glycerol/PBS with 1% BSA and 0.09% sodium azide
Storage condition :	Store at -20°C. Avoid repeated freeze and thaw cycles.

Application Note

Clone RM272 reacts to the cytoplasmic domain of human CD20. Immunohistochemistry (IHC): 1:500-1:1000 dilution; Western Blot (WB): 1:1000-1:2000 dilution.

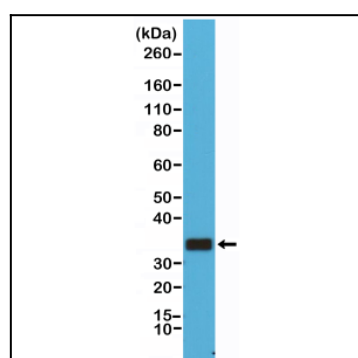


Figure 1: Western Blot of Raji cell lysates using Anti-CD20 Rabbit Monoclonal Antibody (Clone: RM272) at a 1:1000 dilution.