

## 10-9628: Recombinant Rabbit Monoclonal Antibody to Phospho Acetyl CoA Carboxylase (S79) (ACC1) (Clone: RM270)(Discontinued)

<b>Clonality :</b>	Monoclonal
<b>Clone Name :</b>	RM270
<b>Application :</b>	IHC,WB
<b>Reactivity :</b>	Human
<b>Gene :</b>	ACACA
<b>Gene ID :</b>	31 , 32
<b>Uniprot ID :</b>	Q13085 , O00763
<b>Format :</b>	Purified
<b>Alternative Name :</b>	ACACA, ACAC, ACC1, ACCA
<b>Isotype :</b>	Rabbit IgG
<b>Immunogen Information :</b>	A phospho-peptide corresponding to human Phospho- Acetyl CoA Carboxylase (Ser79)

### Product Info

<b>Amount :</b>	100 $\mu$ l
<b>Purification :</b>	Protein A affinity purified from an animal origin-free culture supernatant
<b>Content :</b>	Antibody in 50% Glycerol/PBS with 1% BSA and 0.09% sodium azide
<b>Storage condition :</b>	Store at -20°C. Avoid repeated freeze and thaw cycles.

### Application Note

Clone RM270 reacts to human Acetyl CoA Carboxylase (ACC1) only when phosphorylated at Ser79. There is no cross-reactivity to Acetyl CoA Carboxylase without phosphorylation at Ser79. Immunohistochemistry (IHC): 1:1000-1:2000 dilution; Western Blot (WB): 1:1000-1:5000 dilution.

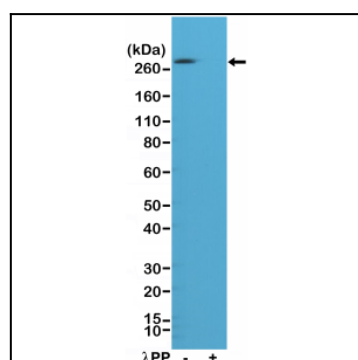


Figure 1: Western Blot of A431 cell lysates, nontreated (-) or treated (+) with Lambda Protein Phosphatase (Lambda PP), using Anti-Phospho-Acetyl CoA Carboxylase (Ser79) Rabbit Monoclonal Antibody (Clone: RM270) at a 1:1000 dilution.

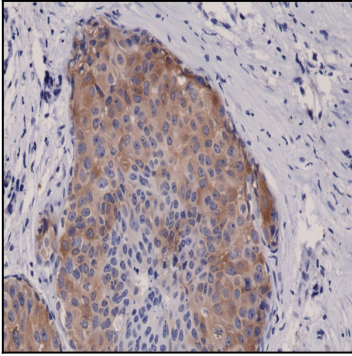


Figure-2: Immunohistochemical staining of formalin fixed and paraffin embedded human breast cancer tissue sections using Anti-Phospho-Acetyl CoA Carboxylase (Ser79) Rabbit Monoclonal Antibody (clone RM270) at a 1:5000 dilution.