

10-9627: Recombinant Rabbit Monoclonal Antibody to Phospho-EGFR (Y1173) (Clone: RM269)(Discontinued)

Clonality :	Monoclonal
Clone Name :	RM269
Application :	WB,IHC
Reactivity :	Human
Gene :	EGFR
Gene ID :	1956
Uniprot ID :	P00533
Format :	Purified
Alternative Name :	EGFR, ERBB, ERBB1, HER1
Isotype :	Rabbit IgG
Immunogen Information :	A phospho-peptide corresponding to human Phospho- EGFR (Tyr1173)

Product Info

Amount :	100 μ l
Purification :	Protein A affinity purified from an animal origin-free culture supernatant
Content :	Antibody in 50% Glycerol/PBS with 1% BSA and 0.09% sodium azide
Storage condition :	Store at -20°C. Avoid repeated freeze and thaw cycles.

Application Note

Clone RM269 reacts to human EGF Receptor only when phosphorylated at Tyr1173. There is no cross-reactivity to EGFR without phosphorylation at Tyr1173. Immunohistochemistry (IHC): 1:500-1:1000 dilution; Western Blot (WB): 1:1000-1:5000 dilution.

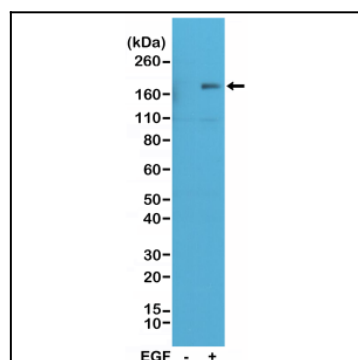


Figure 1: Western Blot of A431 cell nontreated (-) or treated (+) with EGF, using Anti-Phospho-EGFR (Tyr1173) Rabbit Monoclonal Antibody (Clone: RM269) at a 1:500 dilution, showed Phospho-EGFR (Tyr1173) in EGF-treated A431 cells.