

10-9624: Recombinant Rabbit Monoclonal Antibody to CK8 (Cytokeratin-8) (Clone: RM266)(Discontinued)

Clonality :	Monoclonal
Clone Name :	RM266
Application :	WB,IHC
Reactivity :	Human
Gene :	KRT8
Gene ID :	3856
Uniprot ID :	P05787
Format :	Purified
Alternative Name :	KRT8, CYK8
Isotype :	Rabbit IgG
Immunogen Information :	A peptide corresponding to the C-terminus of human Cytokeratin-8.

Product Info

Amount :	100 μ l
Purification :	Protein A affinity purified from an animal origin-free culture supernatant
Content :	Antibody in 50% Glycerol/PBS with 1% BSA and 0.09% sodium azide
Storage condition :	Store at -20°C. Avoid repeated freeze and thaw cycles.

Application Note

Clone RM266 reacts to human CK8 (Cytokeratin-8). Immunohistochemistry (IHC): 1:1000-1:2000 dilution; Western Blot (WB): 1:1000-1:2000 dilution.

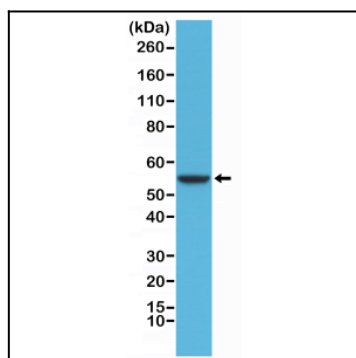


Figure 1: Western Blot of HeLa cells lysates using Anti-CK8 Rabbit Monoclonal Antibody (Clone: RM266) at a 1:1000 dilution.