

## 10-9623: Recombinant Rabbit Monoclonal Antibody to PTEN (Clone: RM265)(Discontinued)

<b>Clonality :</b>	Monoclonal
<b>Clone Name :</b>	RM265
<b>Application :</b>	WB,IHC
<b>Reactivity :</b>	Human ,Mouse
<b>Gene :</b>	PTEN
<b>Gene ID :</b>	5728
<b>Uniprot ID :</b>	P60484
<b>Format :</b>	Purified
<b>Alternative Name :</b>	PTEN, MMAC1, TEP1
<b>Isotype :</b>	Rabbit IgG
<b>Immunogen Information :</b>	A peptide corresponding to the C-terminus of human PTEN

### Product Info

<b>Amount :</b>	100 µl
<b>Purification :</b>	Protein A affinity purified from an animal origin-free culture supernatant
<b>Content :</b>	Antibody in 50% Glycerol/PBS with 1% BSA and 0.09% sodium azide
<b>Storage condition :</b>	Store at -20°C. Avoid repeated freeze and thaw cycles.

### Application Note

Clone RM265 reacts to human Phosphatidylinositol 3,4,5-trisphosphate 3-phosphatase and has dual-specificity to protein phosphatase PTEN. This antibody may also react to mouse PTEN, as predicted by immunogen homology. Immunohistochemistry (IHC): 1:1000-1:2000 dilution; Western Blot (WB): 1:1000-1:2000 dilution.

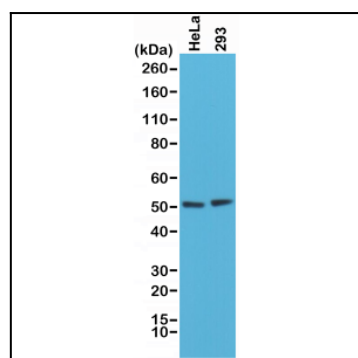


Figure 1: Western Blot of HeLa and 293 cells lysates using Anti-PTEN Rabbit Monoclonal Antibody (Clone: RM265) at a 1:1000 dilution.