

## 10-9621: Recombinant Rabbit Monoclonal Antibody to Synaptophysin (Clone: RM258)(Discontinued)

<b>Clonality :</b>	Monoclonal
<b>Clone Name :</b>	RM258
<b>Application :</b>	IHC,WB
<b>Reactivity :</b>	Human
<b>Gene :</b>	SYP
<b>Gene ID :</b>	6855
<b>Uniprot ID :</b>	P08247
<b>Format :</b>	Purified
<b>Alternative Name :</b>	SYP
<b>Isotype :</b>	Rabbit IgG
<b>Immunogen Information :</b>	A peptide corresponding to the C-terminus of Synaptophysin

### Product Info

<b>Amount :</b>	100 $\mu$ l
<b>Purification :</b>	Protein A affinity purified from an animal origin-free culture supernatant
<b>Content :</b>	0.2 mg/ml. Antibody in 50% Glycerol/PBS with 1% BSA and 0.09% sodium azide
<b>Storage condition :</b>	Store at -20°C. Avoid repeated freeze and thaw cycles.

### Application Note

Clone RM258 reacts to human Synaptophysin. Western Blot (WB): 1:1000-1:2000 dilution; Immunohistochemistry (IHC): 1:200- 1:500 dilution.

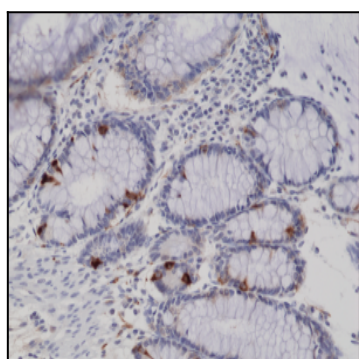


Figure 1: Immunohistochemical staining of formalin fixed and paraffin embedded human colon tissue sections using anti-Synaptophysin rabbit monoclonal antibody (Clone: RM258) at a 1:200 dilution.