

## 10-9620: Recombinant Rabbit Monoclonal Antibody to Phospho-Stat3 (Tyr705), STAT3 (phospho Tyr705) (Clone: RM261)(Discontinued)

<b>Clonality :</b>	Monoclonal
<b>Clone Name :</b>	RM261
<b>Application :</b>	WB,IHC
<b>Reactivity :</b>	Human,Mouse, Rat
<b>Gene :</b>	STAT3
<b>Gene ID :</b>	6774
<b>Uniprot ID :</b>	P40763
<b>Format :</b>	Purified
<b>Alternative Name :</b>	STAT3, APRF
<b>Isotype :</b>	Rabbit IgG
<b>Immunogen Information :</b>	A phospho-peptide corresponding to human Phospho- Stat3 (Tyr705)

### Product Info

<b>Amount :</b>	100 µl
<b>Purification :</b>	Protein A affinity purified from an animal origin-free culture supernatant
<b>Content :</b>	Antibody in 50% Glycerol/PBS with 1% BSA and 0.09% sodium azide
<b>Storage condition :</b>	Store at -20°C. Avoid repeated freeze and thaw cycles.

### Application Note

Clone RM261 reacts to human Stat3 only when phosphorylated at Tyr705. There is no cross-reactivity to stat3 without phosphorylation at Tyr705. This antibody may also react to mouse or rat Phospho-Stat3 (Tyr705), as predicted by immunogen homology. Immunohistochemistry (IHC): 1:1000-1:10,000 dilution; Western Blot (WB): 1:1000-1:2000 dilution.

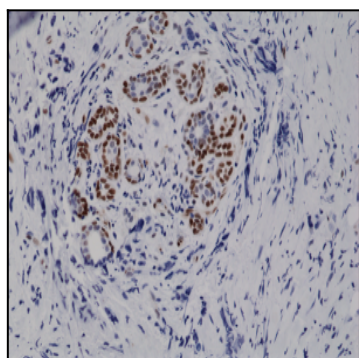


Figure 1: Immunohistochemical staining of formalin fixed and paraffin embedded human breast cancer tissue sections using Anti-Phospho-Stat3 (Tyr705) Rabbit Monoclonal Antibody (Clone: RM261) at a 1:10,000 dilution.