

10-9619: Recombinant Rabbit Monoclonal Antibody to Alpha Cardiac Actin (ACTC1) (Clone: RM257)(Discontinued)

Clonality :	Monoclonal
Clone Name :	RM257
Application :	WB,IHC
Reactivity :	Human, Mouse,Rat, Bovine
Gene :	ACTC1
Gene ID :	70
Uniprot ID :	P68032
Format :	Purified
Alternative Name :	ACTC1, ACTC
Isotype :	Rabbit IgG
Immunogen Information :	A synthetic peptide corresponding to the N-terminus of human alpha-cardiac actin

Product Info

Amount :	100 μ l
Purification :	Protein A affinity purified from an animal origin-free culture supernatant
Content :	Antibody in 50% Glycerol/PBS with 1% BSA and 0.09% sodium azide
Storage condition :	Store at -20°C. Avoid repeated freeze and thaw cycles.

Application Note

Clone RM257 reacts to human and mouse alpha cardiac actin (Actin, alpha cardiac muscle 1). This antibody may also react to bovine or rat alpha-cardiac actin, as predicted by immunogen homology Immunohistochemistry (IHC): 1:1000-1:2000 dilution; Western Blot (WB): 1:1000-1:2000 dilution.

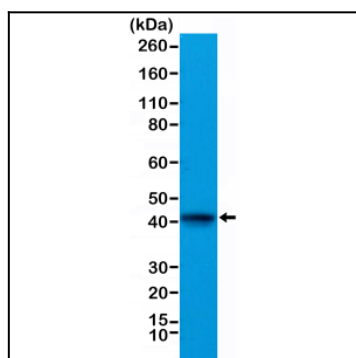


Figure 1: Western Blot of mouse heart tissue lysate, using Anti-alpha cardiac actin Clone: RM257 at a 1:1000 dilution.