

10-9618: Recombinant Rabbit Monoclonal Antibody to Paxillin (Clone: RM256)(Discontinued)

Clonality :	Monoclonal
Clone Name :	RM256
Application :	WB,IHC
Reactivity :	Human ,Mouse, Rat
Gene :	PXN
Gene ID :	5829
Uniprot ID :	P49023
Format :	Purified
Alternative Name :	PXN
Isotype :	Rabbit IgG
Immunogen Information :	A peptide corresponding to the N-terminus of human Paxillin

Product Info

Amount :	100 μ l
Purification :	Protein A affinity purified from an animal origin-free culture supernatant
Content :	Antibody in 50% Glycerol/PBS with 1% BSA and 0.09% sodium azide
Storage condition :	Store at -20°C. Avoid repeated freeze and thaw cycles.

Application Note

Clone RM256 reacts to human Paxillin. This antibody may also react to mouse or rat Paxillin, as predicted by immunogen homology. Immunocytochemistry (ICC): 1:1000-1:2000 dilution; Western Blot (WB): 1:1000-1:2000 dilution.

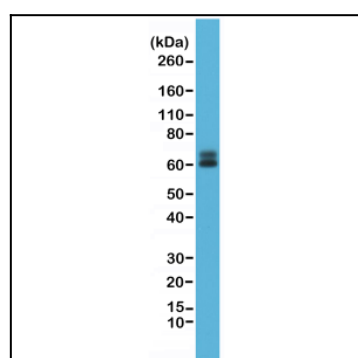


Figure 1: Western Blot of HeLa cell lysate, using anti-Paxillin rabbit monoclonal Antibody Clone: RM256 at a 1:1000 dilution.