

10-9616: Recombinant Rabbit Monoclonal Antibody to Calponin-1 (Clone: RM262)(Discontinued)

Clonality :	Monoclonal
Clone Name :	RM262
Application :	WB,ICC
Reactivity :	Human, Mouse
Gene :	CNN1
Gene ID :	1264
Uniprot ID :	P51911
Format :	Purified
Isotype :	Rabbit IgG
Immunogen Information :	A peptide corresponding to the C-terminus of human Calponin-1

Product Info

Amount :	100 μ l
Purification :	Protein A affinity purified from an animal origin-free culture supernatant
Content :	Antibody in 50% Glycerol/PBS with 1% BSA and 0.09% sodium azide
Storage condition :	Store at -20°C. Avoid repeated freeze and thaw cycles.

Application Note

Clone RM262 reacts to human or mouse Calponin-1 Western Blot (WB): 1:1000-1:2000 dilution; Immunocytochemistry (ICC): 1:100-1:200.

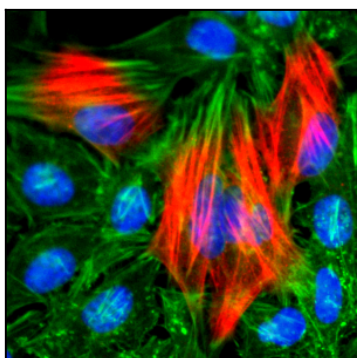


Figure 1: Immunocytochemistry of HeLa cells, using Calponin-1 Rabbit Monoclonal Antibody (Clone: RM262) (red). Actin filaments have been labeled with fluorescein phalloidin (green), and nucleus stained with DAPI (blue).