

## 10-9614: Recombinant Rabbit Monoclonal Antibody to Akt1 (Clone: RM252)(Discontinued)

<b>Clonality :</b>	Monoclonal
<b>Clone Name :</b>	RM252
<b>Application :</b>	WB,IHC
<b>Reactivity :</b>	Human,Mouse, Rat
<b>Gene :</b>	AKT1
<b>Gene ID :</b>	207
<b>Uniprot ID :</b>	P31749
<b>Format :</b>	Purified
<b>Alternative Name :</b>	AKT1, PKB, RAC
<b>Isotype :</b>	Rabbit IgG
<b>Immunogen Information :</b>	A synthetic peptide corresponding to the C-terminus of human Akt1

### Product Info

<b>Amount :</b>	100 $\mu$ l
<b>Purification :</b>	Protein A affinity purified from an animal origin-free culture supernatant
<b>Content :</b>	Antibody in 50% Glycerol/PBS with 1% BSA and 0.09% sodium azide
<b>Storage condition :</b>	Store at -20°C. Avoid repeated freeze and thaw cycles.

### Application Note

Clone RM252 reacts to human Akt1. This antibody may also react to bovine, mouse or rat Akt1, as predicted by immunogen homology. Immunohistochemistry (IHC): 1:500-1:1000 dilution; Western Blot (WB): 1:1000-1:2000 dilution.

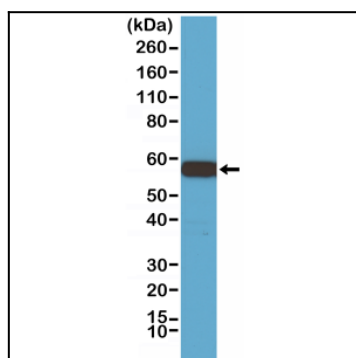


Figure 1: Western Blot of 293 cell lysate, using Anti-Akt1 Clone: RM252 at a 1:1000 dilution, showed Akt1 (~56 kDa) expression in 293 cells.