

## 10-9613: Recombinant Rabbit Monoclonal Antibody to alpha smooth muscle Actin (ACTA2) (Clone: RM253)(Discontinued)

<b>Clonality :</b>	Monoclonal
<b>Clone Name :</b>	RM253
<b>Application :</b>	WB,IHC
<b>Reactivity :</b>	Human, Mouse,Bovine, Rat
<b>Gene :</b>	ACTA2
<b>Gene ID :</b>	59
<b>Uniprot ID :</b>	P62736
<b>Format :</b>	Purified
<b>Alternative Name :</b>	ACTA2, ACTSA, ACTVS, GIG46
<b>Isotype :</b>	Rabbit IgG
<b>Immunogen Information :</b>	A synthetic peptide corresponding to the N-terminus of human alpha smooth muscle Actin

### Product Info

<b>Amount :</b>	100 µl
<b>Purification :</b>	Protein A affinity purified from an animal origin-free culture supernatant
<b>Content :</b>	Antibody in 50% Glycerol/PBS with 1% BSA and 0.09% sodium azide
<b>Storage condition :</b>	Store at -20°C. Avoid repeated freeze and thaw cycles.

### Application Note

Clone RM253 reacts to human and mouse alpha smooth muscle Actin (alpha-Actin-2). This antibody may also react to bovine or rat alpha smooth muscle Actin, as predicted by immunogen homology Immunohistochemistry (IHC): 1:1000-1:2500 dilution; Western Blot (WB): 1:1000-1:2000 dilution.

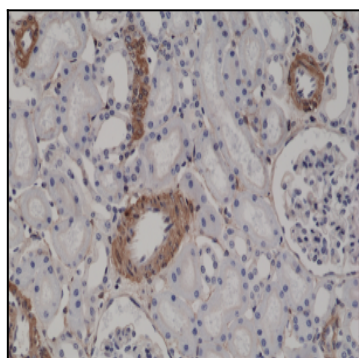


Figure 1: Immunohistochemical staining of formalin fixed and paraffin embedded human kidney tissue sections using Anti-alpha smooth muscle Actin Clone: RM253 at a 1:2500 dilution.

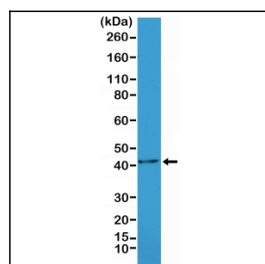


Figure 2: Western Blot of mouse heart tissue lysate, using Anti-alpha smooth muscle Actin Clone: RM253 at a 1:1000 dilution.