

10-9612: Recombinant Rabbit Monoclonal Antibody to phospho-Akt (Ser473), AKT1 (phospho S473) (Clone: RM251)(Discontinued)

Clonality :	Monoclonal
Clone Name :	RM251
Application :	WB,IHC
Reactivity :	Human,Bovine, Mouse, Rat
Gene :	AKT1
Gene ID :	207 , 208 , 10000
Uniprot ID :	P31749 , P31751 , Q9Y243
Format :	Purified
Alternative Name :	AKT1, PKB, RAC
Isotype :	Rabbit IgG
Immunogen Information :	A phospho-peptide corresponding to human Phospho-Akt (Ser473)

Product Info

Amount :	100 µl
Purification :	Protein A affinity purified from an animal origin-free culture supernatant
Content :	Antibody in 50% Glycerol/PBS with 1% BSA and 0.09% sodium azide
Storage condition :	Store at -20°C. Avoid repeated freeze and thaw cycles.

Application Note

Clone RM251 reacts to Akt only when phosphorylated at Ser473. There is no cross-reactivity with Akt without phosphorylation at Ser473. This antibody may also react to bovine, mouse or rat Phospho-Akt (Ser473), as predicted by immunogen homology. Immunohistochemistry (IHC): 1:200-1:500 dilution; Western Blot (WB): 1:1000-1:2000 dilution.

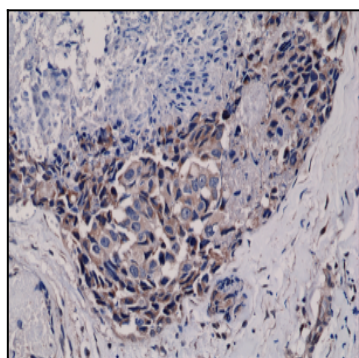


Figure 1: Immunohistochemical staining of formalin fixed and paraffin embedded human breast cancer tissue sections using Anti-Phospho-Akt (Ser473) Clone: RM251 at a 1:400 dilution.