

## 10-9611: Recombinant Rabbit Monoclonal Antibody to Caspase-3 (Clone: RM250)(Discontinued)

<b>Clonality :</b>	Monoclonal
<b>Clone Name :</b>	RM250
<b>Application :</b>	IHC,WB
<b>Reactivity :</b>	Human
<b>Gene :</b>	CASP3
<b>Gene ID :</b>	836
<b>Uniprot ID :</b>	P42574
<b>Format :</b>	Purified
<b>Alternative Name :</b>	CASP3, CPP32
<b>Isotype :</b>	Rabbit IgG
<b>Immunogen Information :</b>	A synthetic peptide corresponding to residues within human Caspase-3 subunit p17

### Product Info

<b>Amount :</b>	100 $\mu$ l
<b>Purification :</b>	Protein A affinity purified from an animal origin-free culture supernatant
<b>Content :</b>	Antibody in 50% Glycerol/PBS with 1% BSA and 0.09% sodium azide
<b>Storage condition :</b>	Store at -20°C. Avoid repeated freeze and thaw cycles.

### Application Note

Clone RM250 reacts to human full length caspase-3 (35 kDa) and the large fragment of caspase-3 resulting from cleavage (17 kDa). Immunohistochemistry (IHC): 1:1000-1:2500 dilution; Western Blot (WB): 1:1000-1:2000 dilution.

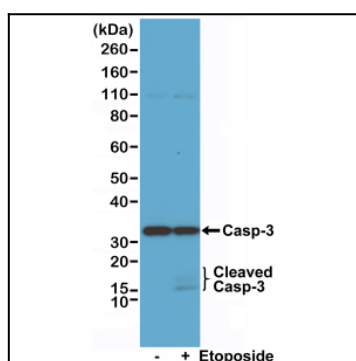


Figure 1: Western Blot of Jurkat cell lysate, untreated or treated with etoposide, using Anti-Caspase-3 Clone: RM250 at a 1:1000 dilution.