

10-9610: Recombinant Rabbit Monoclonal Antibody to CD146, MCAM, MUC18 (Clone: RM249)(Discontinued)

| | |
|--------------------------------|--|
| Clonality : | Monoclonal |
| Clone Name : | RM249 |
| Application : | WB,IHC |
| Reactivity : | Human,Mouse, Rat |
| Gene : | MCAM |
| Gene ID : | 4162 |
| Uniprot ID : | P43121 |
| Format : | Purified |
| Alternative Name : | MCAM, MUC18 |
| Isotype : | Rabbit IgG |
| Immunogen Information : | A synthetic peptide corresponding to the residues near C-terminus of human CD146 |

Product Info

| | |
|----------------------------|--|
| Amount : | 100 µl |
| Purification : | Protein A affinity purified from an animal origin-free culture supernatant |
| Content : | Antibody in 50% Glycerol/PBS with 1% BSA and 0.09% sodium azide |
| Storage condition : | Store at -20°C. Avoid repeated freeze and thaw cycles. |

Application Note

Clone RM249 reacts to human CD146 (Cell surface glycoprotein MUC18). This antibody may also react to mouse or rat CD146, as predicted by immunogen homology. Immunohistochemistry (IHC): 1:200-1:500 dilution; Western Blot (WB): 1:1000-1:2000 dilution.

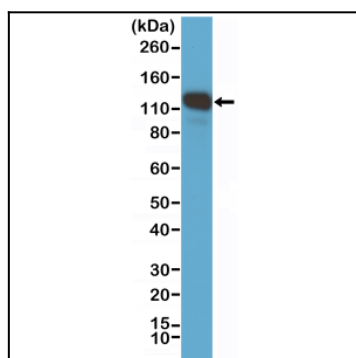


Figure 1: Western Blot of A375 cell lysate, using Anti-CD146 Clone: RM249 at a 1:1000 dilution, showed CD146 (~110 kDa) expression in A375 cells.