

10-9608: Recombinant Rabbit Monoclonal Antibody to GFAP (Glial Fibrillary Acidic Protein) (Clone: RM246)(Discontinued)

Clonality :	Monoclonal
Clone Name :	RM246
Application :	WB,IHC
Reactivity :	Human, Mouse
Gene :	GFAP
Gene ID :	2670
Uniprot ID :	P14136
Format :	Purified
Alternative Name :	GFAP
Isotype :	Rabbit IgG
Immunogen Information :	A peptide corresponding to the N-terminus of human GFAP

Product Info

Amount :	100 μ l
Purification :	Protein A affinity purified from an animal origin-free culture supernatant
Content :	Antibody in 50% Glycerol/PBS with 1% BSA and 0.09% sodium azide
Storage condition :	Store at -20°C. Avoid repeated freeze and thaw cycles.

Application Note

Clone RM246 reacts to human and mouse GFAP (Glial fibrillary acidic protein). Immunohistochemistry (IHC): 1:200-1:500 dilution; Western Blot (WB): 1:1000-1:3000 dilution.

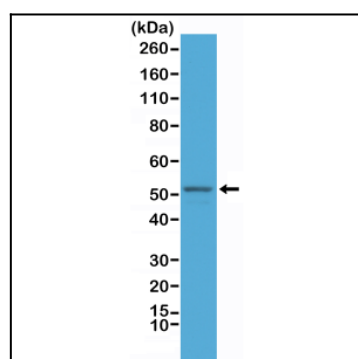


Figure 1: Western Blot of mouse brain tissue lysate, using Anti-GFAP Clone: RM246 at a 1:2500 dilution, showed GFAP (~50 kDa) expression in mouse brain.