

## 10-9607: Recombinant Rabbit Monoclonal Antibody to p38 MAPK (Clone: RM245)(Discontinued)

<b>Clonality :</b>	Monoclonal
<b>Clone Name :</b>	RM245
<b>Application :</b>	WB,IHC
<b>Reactivity :</b>	Human,Rat, Mouse
<b>Gene :</b>	MAPK14
<b>Gene ID :</b>	1432 , 5600 , 6300
<b>Uniprot ID :</b>	Q16539 , Q15759 , P53778
<b>Format :</b>	Purified
<b>Alternative Name :</b>	MAPK14, CSBP, CSBP1, CSBP2, CSPB1, MXI2, SAPK2A
<b>Isotype :</b>	Rabbit IgG
<b>Immunogen Information :</b>	A peptide corresponding to human p38 MAPK.

### Product Info

<b>Amount :</b>	100 µl
<b>Purification :</b>	Protein A affinity purified from an animal origin-free culture supernatant
<b>Content :</b>	Antibody in 50% Glycerol/PBS with 1% BSA and 0.09% sodium azide
<b>Storage condition :</b>	Store at -20°C. Avoid repeated freeze and thaw cycles.

### Application Note

Clone RM245 reacts to human p38 MAPK. This antibody may also react to rat and mouse p38 MAPK, as predicted by immunogen homology. Immunohistochemistry (IHC): 1:1000-1:5000 dilution; Western Blot (WB): 1:1000-1:2000 dilution.

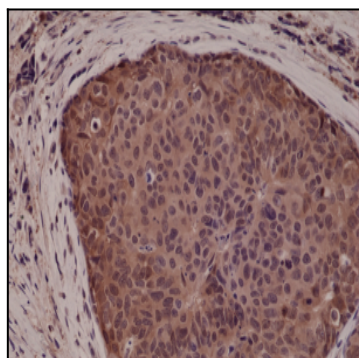


Figure 1: Immunohistochemical staining of formalin fixed and paraffin embedded human breast cancer tissue sections using Anti-p38 MAPK Clone: RM245 at a 1:5000 dilution.