

10-9606: Recombinant Rabbit Monoclonal Antibody to E-Cadherin, CDH1, Cadherin-1 (Clone: RM244)(Discontinued)

Clonality :	Monoclonal
Clone Name :	RM244
Application :	WB,IHC
Reactivity :	Human
Gene :	CDH1
Gene ID :	Å 999
Uniprot ID :	P12830
Format :	Purified
Alternative Name :	CDH1, CDHE, UVO
Isotype :	Rabbit IgG
Immunogen Information :	A peptide corresponding to Cadherin-1

Product Info

Amount :	100 µl
Purification :	Protein A affinity purified from an animal origin-free culture supernatant
Content :	Antibody in 50% Glycerol/PBS with 1% BSA and 0.09% sodium azide
Storage condition :	Store at -20°C. Avoid repeated freeze and thaw cycles.

Application Note

Clone RM244 reacts to human E-cadherin (Cadherin-1). Immunohistochemistry (IHC): 1:500-1:1000 dilution; Western Blot (WB): 1:1000-1:2000 dilution.

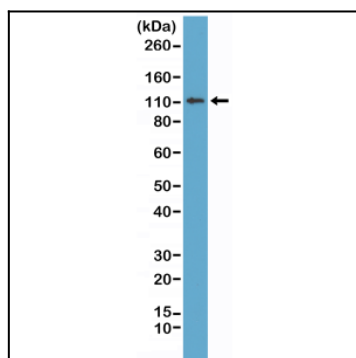


Figure 1: Western Blot of MCF-7 cell lysates using Anti-E-cadherin Clone: RM244 at a 1:1000 dilution, showed a band of E-cadherin (~120 kDa) expressed in MCF-7 cells.