

10-9605: Recombinant Rabbit Monoclonal Antibody to Phospho-p38 MAPK (Thr180/Tyr182) (Clone: RM243)(Discontinued)

Clonality :	Monoclonal
Clone Name :	RM243
Application :	WB,IHC
Reactivity :	Human
Gene :	MAPK14
Gene ID :	1432 , 5600 , 5603 , 6300
Uniprot ID :	Q16539 , Q15759 , O15264 , P53778
Format :	Purified
Alternative Name :	MAPK14, CSBP, CSBP1, CSBP2, CSPB1, MXI2, SAPK2A
Isotype :	Rabbit IgG
Immunogen Information :	A phospho-peptide corresponding to human Phospho-p38 MAPK (Thr180/Tyr182)

Product Info

Amount :	100 µl
Purification :	Protein A affinity purified from an animal origin-free culture supernatant
Content :	Antibody in 50% Glycerol/PBS with 1% BSA and 0.09% sodium azide
Storage condition :	Store at -20°C. Avoid repeated freeze and thaw cycles.

Application Note

Clone RM243 reacts to p38 MAPK only when dual phosphorylation at Thr180 and Tyr182 is observed. There is no cross-reactivity with p38 MAPK without dual phosphorylation at Thr180 and Tyr182. Immunohistochemistry (IHC): 1:500-1:1000 dilution; Western Blot (WB): 1:1000-1:2000 dilution.

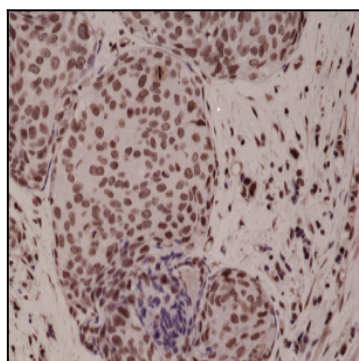


Figure 1: Immunohistochemical staining of formalin fixed and paraffin embedded human breast cancer tissue sections using Anti-Phospho-p38 MAPK (Thr180/Tyr182) Clone: RM243 at a 1:1000 dilution.