

10-9604: Recombinant Rabbit Monoclonal Antibody to HIF-1-alpha (HIF1A) (Clone: RM242)(Discontinued)

Clonality :	Monoclonal
Clone Name :	RM242
Application :	IHC,WB
Reactivity :	Human
Gene :	HIF1A
Gene ID :	3091
Uniprot ID :	Q16665
Format :	Purified
Alternative Name :	HIF1A, BHLHE78, MOP1, PASD8
Isotype :	Rabbit IgG
Immunogen Information :	A peptide corresponding to Hypoxia-inducible factor 1-alpha

Product Info

Amount :	100 μ l
Purification :	Protein A affinity purified from an animal origin-free culture supernatant
Content :	Antibody in 50% Glycerol/PBS with 1% BSA and 0.09% sodium azide
Storage condition :	Store at -20°C. Avoid repeated freeze and thaw cycles.

Application Note

Clone RM242 reacts to human HIF-1-alpha (Hypoxia-inducible factor 1-alpha). Immunohistochemistry (IHC): 1:500-1:1000 dilution; Western Blot (WB): 1:1000-1:2000 dilution.

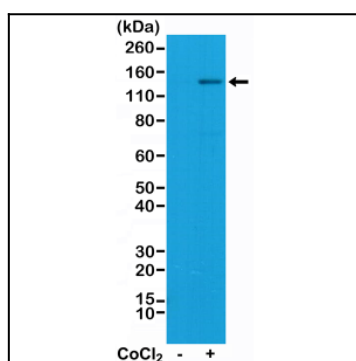


Figure 1: Western Blot of Jurkat cell lysate, nontreated or treated with Cobalt(II) chloride (CoCl₂), using Anti-HIF-1-alpha Clone: RM242 at a 1:1000 dilution, showed that HIF-1-alpha (~120 kDa) expression was induced by CoCl₂ in Jurkat cells.