

10-9603: Recombinant Rabbit Monoclonal Antibody to Cyclin D1 (CCND1)(Clone: RM241)(Discontinued)

Clonality :	Monoclonal
Clone Name :	RM241
Application :	WB,IHC
Reactivity :	Human,Bovine, Mouse ,Rat
Gene :	CCND1
Gene ID :	Å 595
Uniprot ID :	P24385
Format :	Purified
Alternative Name :	CCND1, BCL1, PRAD1
Isotype :	Rabbit IgG
Immunogen Information :	A peptide corresponding to Cyclin D1

Product Info

Amount :	100 µl
Purification :	Protein A affinity purified from an animal origin-free culture supernatant
Content :	Antibody in 50% Glycerol/PBS with 1% BSA and 0.09% sodium azide
Storage condition :	Store at -20°C. Avoid repeated freeze and thaw cycles.

Application Note

Clone RM241 reacts to human Cyclin D1. This antibody may also react to bovine, mouse or rat Cyclin D1, as predicted by immunogen homology. Immunohistochemistry (IHC): 1:500-1:1000 dilution; Western Blot (WB): 1:1000-1:2000 dilution.

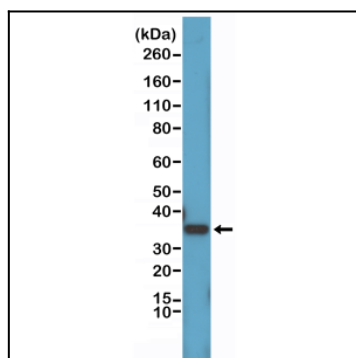


Figure 1: Western Blot of HeLa cell lysates using Anti-Cyclin D1 Clone: RM241 at a 1:1000 dilution, showed a band of Cyclin D1 (~34 kDa) expressed in HeLa cells.