

## 10-9602: Recombinant Rabbit Monoclonal Antibody to Desmin (DESM) (Clone: RM234)(Discontinued)

<b>Clonality :</b>	Monoclonal
<b>Clone Name :</b>	RM234
<b>Application :</b>	WB,IHC
<b>Reactivity :</b>	Human, Mouse,Bovine, Rat
<b>Gene :</b>	DES
<b>Gene ID :</b>	1674
<b>Uniprot ID :</b>	P17661
<b>Format :</b>	Purified
<b>Alternative Name :</b>	DES
<b>Isotype :</b>	Rabbit IgG
<b>Immunogen Information :</b>	A peptide corresponding to human Desmin

### Product Info

<b>Amount :</b>	100 $\mu$ l
<b>Purification :</b>	Protein A affinity purified from an animal origin-free culture supernatant
<b>Content :</b>	Antibody in 50% Glycerol/PBS with 1% BSA and 0.09% sodium azide
<b>Storage condition :</b>	Store at -20°C. Avoid repeated freeze and thaw cycles.

### Application Note

Clone RM234 reacts to human and mouse Desmin. This antibody may also react to rat and Bovine Desmin, as predicted by immunogen homology. Immunohistochemistry (IHC): 1:1000-1:4000 dilution; Western Blot (WB): 1:1000-1:2000 dilution.

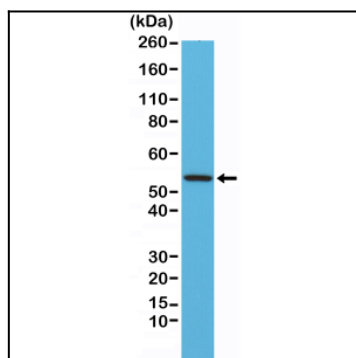


Figure 1: Western Blot of mouse heart tissue lysates using Anti-Desmin Clone: RM234 at a 1:1000 dilution, showed a band of Desmin (~54 kDa) expressed in mouse heart.