

10-9601: Recombinant Rabbit Monoclonal Antibody to phospho-Rsk1 (Thr359/Ser363) (Clone: RM233)(Discontinued)

Clonality :	Monoclonal
Clone Name :	RM233
Application :	WB,IHC
Reactivity :	Human
Gene :	RPS6KA1
Gene ID :	6195 , 6196
Uniprot ID :	Q15418 , Q15349
Format :	Purified
Alternative Name :	RPS6KA1, MAPKAPK1A, RSK1
Isotype :	Rabbit IgG
Immunogen Information :	A phospho-peptide corresponding to human phospho-Rsk1 (Thr359/Ser363)

Product Info

Amount :	100 µl
Purification :	Protein A affinity purified from an animal origin-free culture supernatant
Content :	Antibody in 50% Glycerol/PBS with 1% BSA and 0.09% sodium azide
Storage condition :	Store at -20°C. Avoid repeated freeze and thaw cycles.

Application Note

Clone RM233 reacts to human RSK1 only when phosphorylated at Thr359/Ser363. Immunohistochemistry (IHC): 1:200-1:500 dilution; Western Blot (WB): 1:1000-1:2000 dilution.

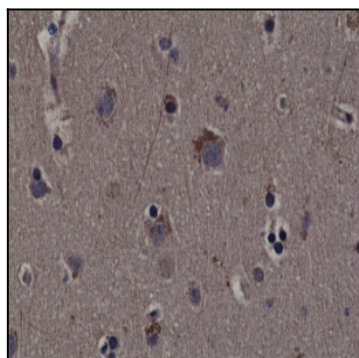


Figure 1: Immunohistochemical staining of formalin fixed and paraffin embedded human cerebral cortex tissue sections using Anti-phospho-Rsk1 (Thr359/Ser363) Clone: RM233 at a 1:200 dilution.