

10-9599: Recombinant Rabbit Monoclonal Antibody to HER2 (Clone: RM228)(Discontinued)

Clonality :	Monoclonal
Clone Name :	RM228
Application :	IHC,WB
Reactivity :	Human
Gene :	ERBB2
Gene ID :	2064
Uniprot ID :	P04626
Format :	Purified
Alternative Name :	ERBB2, HER2, MLN19, NEU, NGL
Isotype :	Rabbit IgG
Immunogen Information :	A peptide corresponding to the C-terminus of Human c-erbB-2/HER-2

Product Info

Amount :	100 μ l
Purification :	Protein A affinity purified from an animal origin-free culture supernatant
Content :	Antibody in 50% Glycerol/PBS with 1% BSA and 0.09% sodium azide
Storage condition :	Store at -20°C. Avoid repeated freeze and thaw cycles.

Application Note

Clone RM228 reacts to Human c-erbB-2/HER-2. This antibody may also react to mouse or rat c-erbB-2/HER-2, as predicted by immunogen homology. Immunohistochemistry (IHC): 1:100 - 1:400 dilution; Western Blot (WB): 1:1000 dilution.

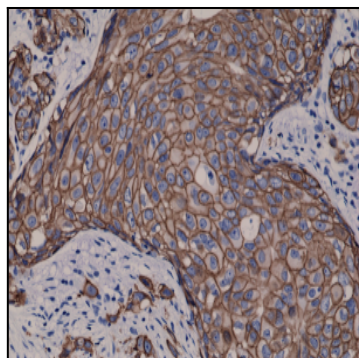


Figure 1: Immunohistochemical staining of FFPE human breast cancer tissue sections, using Anti-HER2 (c-erbB-2) Rabbit Monoclonal antibody Clone: RM228.

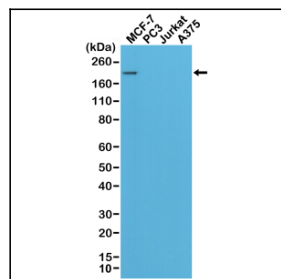


Figure 2: Western Blot of MCF-7, PC3, Jurkat, and A375 cell lysates using Clone: RM228, showed a band of Her2 expressed only in MCF-7 cells.