

10-9598: Recombinant Rabbit Monoclonal Antibody to KI67 (Clone: RM227)(Discontinued)

Clonality :	Monoclonal
Clone Name :	RM227
Application :	IHC,WB
Reactivity :	Human
Gene :	MKI67
Gene ID :	4288
Uniprot ID :	P46013
Format :	Purified
Alternative Name :	MKI67
Isotype :	Rabbit IgG
Immunogen Information :	A peptide corresponding to the internal region of human Ki67

Product Info

Amount :	100 µl
Purification :	Protein A affinity purified from an animal origin-free culture supernatant
Content :	Antibody in 50% Glycerol/PBS with 1% BSA and 0.09% sodium azide
Storage condition :	Store at -20°C. Avoid repeated freeze and thaw cycles.

Application Note

Clone RM227 reacts to Human Antigen KI-67. Immunohistochemistry (IHC): 1:100 - 1:400 dilution Western Blot (WB): 1:100
1:500 dilution

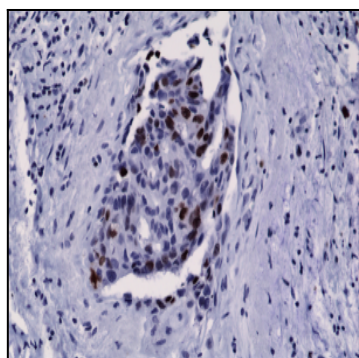


Figure 1: Immunohistochemical staining of FFPE human breast cancer tissue sections, using Anti-Human KI67 Rabbit Monoclonal antibody Clone: RM227.

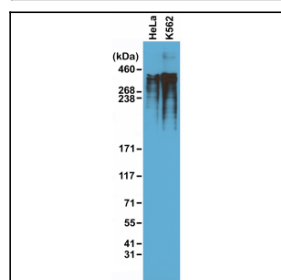


Figure 2: Western Blot of HeLa and K562 cell lysates using Anti-KI67 (Clone: RM227) rabbit monoclonal antibody.