

10-9597: Recombinant Rabbit Monoclonal Antibody to CK5 (Cytokeratin 5) (Clone: RM226)(Discontinued)

Clonality :	Monoclonal
Clone Name :	RM226
Application :	IHC,WB
Reactivity :	Human
Gene :	KRT5
Gene ID :	3852
Uniprot ID :	P13647
Format :	Purified
Alternative Name :	KRT5
Isotype :	Rabbit IgG
Immunogen Information :	A peptide corresponding to the C-terminus of Human Cytokeratin 5

Product Info

Amount :	100 µl
Purification :	Protein A affinity purified from an animal origin-free culture supernatant
Content :	Antibody in 50% Glycerol/PBS with 1% BSA and 0.09% sodium azide
Storage condition :	Store at -20°C. Avoid repeated freeze and thaw cycles.

Application Note

Clone RM226 reacts to Human Cytokeratin 5. This antibody may also react to bovine, mouse, or rat Cytokeratin, as predicted by immunogen homology. Immunohistochemistry (IHC): 1:100 -1:400 dilution; Western Blot (WB): 1:1000 dilution.

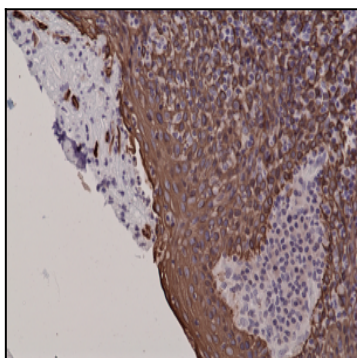


Figure 1: Immunohistochemical staining of FFPE human tonsil tissue sections, using Anti-Cytokeratin 5 Rabbit Monoclonal antibody Clone: RM226.

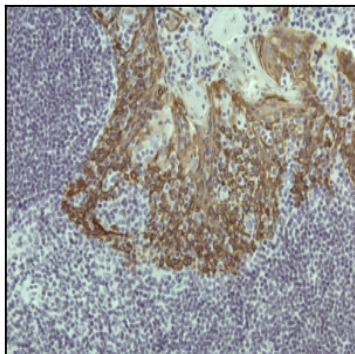


Figure 2: Immunohistochemical staining of FFPE human tonsil tissue sections, using Anti-Cytokeratin 5 Rabbit Monoclonal antibody Clone: RM226.

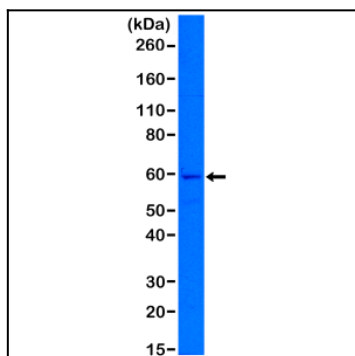


Figure 3: Western Blot of A431 cell lysates using Clone: RM226, showed a band of Cytokeratin 5 expressed in A431 cells.