

10-9596: Recombinant Rabbit Monoclonal Antibody to BRAF (V600E) Mutant (Clone: RM8)(Discontinued)

Clonality :	Monoclonal
Clone Name :	RM8
Application :	ICC,IHC,WB
Reactivity :	Human
Gene :	BRAF
Gene ID :	673
Uniprot ID :	P15056
Format :	Purified
Alternative Name :	BRAF, BRAF1, RAFB1
Isotype :	Rabbit IgG
Immunogen Information :	A peptide corresponding to BRAF V600E mutant

Product Info

Amount :	50 µg / 100 µg
Purification :	Protein A affinity purified from an animal origin-free culture supernatant
Content :	1 mg/ml in 50% Glycerol/PBS with 1% BSA and 0.09% sodium azide
Storage condition :	Store at -20°C. Avoid repeated freeze and thaw cycles.

Application Note

IHC, ICC: 2 µg/ml; ELISA: 0.5 µg/ml; WB: 0.5 µg/ml.

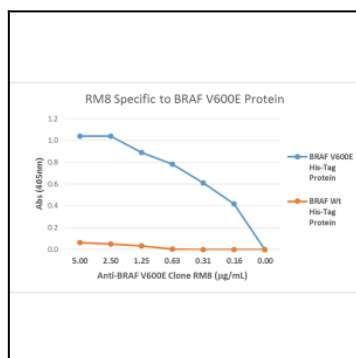


Figure 1: Sandwich ELISA performed on the lysates of 293T cells overexpressing BRAF V600E or BRAF wild type His-tag proteins, shows the specificity of Clone: RM8 to the V600E mutation. His-tag fusion proteins were captured by an Anti-His-Tag antibody.

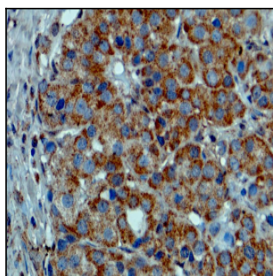


Figure 2: Immunohistochemical staining of formalin fixed and paraffin embedded melanoma tissue sections.

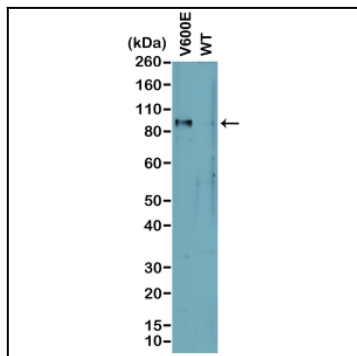


Figure 3: Western Blot analysis of cell lysates prepared from cell lines expressing endogenous mutant (V600E) BRAF or wild type (WT) protein.

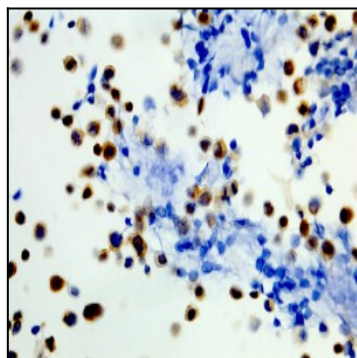


Figure 4: Immunohistochemical staining of formalin fixed and paraffin embedded human cell line sections. WiDr Cells (400X, Positive)

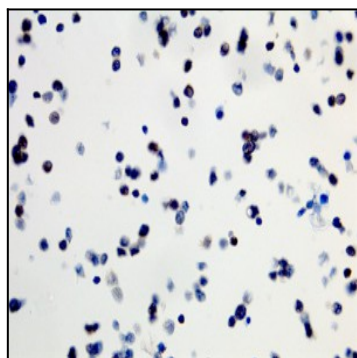


Figure 5: Immunohistochemical staining of formalin fixed and paraffin embedded human cell line sections. SW40 Cells (400X, Negative)