

10-9595: Recombinant Rabbit Monoclonal Antibody to His-Tag (6xHis-Tag or 10xHis-Tag) (Clone: RM146)(Discontinued)

Clonality :	Monoclonal
Clone Name :	RM146
Application :	IP, IHC, FACS, WB
Format :	Purified
Isotype :	Rabbit IgG
Immunogen Information :	Mixture of a peptide with 6xHis-Tag at the N-terminus and another peptide with 6xHis-Tag at the C-terminus.

Product Info

Amount :	100 µg
Purification :	Protein A affinity purified from an animal origin-free culture supernatant
Content :	1 mg/ml in 50% Glycerol/PBS with 1% BSA and 0.09% sodium azide
Storage condition :	Store at -20°C. Avoid repeated freeze and thaw cycles.

Application Note

Clone RM146 reacts to recombinant proteins containing the 6xHis-Tag or 10xHis-Tag fused to either the amino or carboxy terminus. No cross reactivity with other endogenous protein in mammalian or bacteria cells. Western Blot: 0.1 µg/ml to 1 µg/ml; Immunoprecipitation: 0.5 µg/ml to 2 µg/ml; Immunocytochemistry 0.5 µg/ml to 2 µg/ml; Flow Cytometry: 0.5 µg/ml to 2 µg/ml; Immunohistochemistry; 0.1 µg/ml-1 µg/ml.

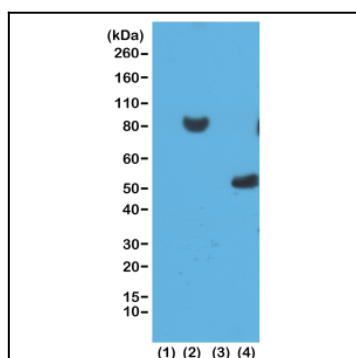


Figure 1: Western blot of 293T cells: (1) untransfected or (2) transfected with His-Tag fusion protein X and (3) E. coli lysate without His-Tag Protein Y (4) E. coli lysate with His-Tag Protein Y Using Clone: RM146 at 0.2 µg/ml.

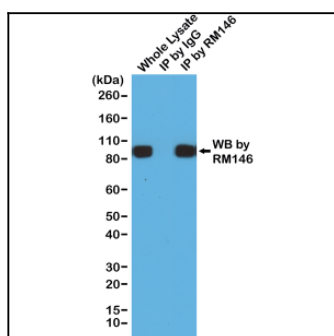


Figure 2: Immunoprecipitation of 293T cells expressing a His-Tag fusion protein by Clone: RM146, was blotted with Clone: RM146. (1) Whole lysate control; (2) IP by rabbit IgG control; (3) IP by Clone: RM146.

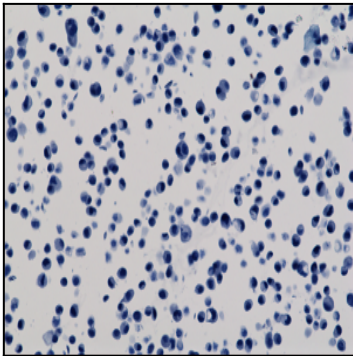


Figure 3: Immunohistochemistry staining of na⁺-ve HepG2 cells (Negative control) using anti-His-Tag antibody, Clone: RM146.

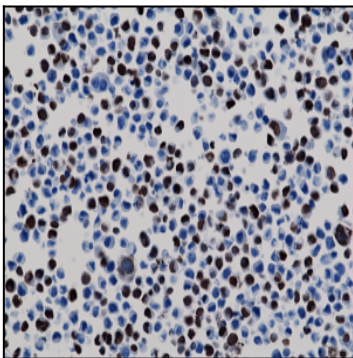


Figure 4: Immunohistochemistry staining of 293T cells expressing His-Tag nuclear protein X, using anti-His-Tag antibody, Clone: RM146.