

10-9592: Recombinant Rabbit Monoclonal Antibody to Pan Histone H3 (Clone: RM188)(Discontinued)

Clonality :	Monoclonal
Clone Name :	RM188
Application :	WB,ELISA,Multiplex,ICC
Reactivity :	All Species
Gene :	H3F3A
Gene ID :	3020
Uniprot ID :	P84243
Format :	Purified
Alternative Name :	Histone H3.3
Isotype :	Rabbit IgG
Immunogen Information :	A peptide corresponding to the C-terminus of human Histone H3

Product Info

Amount :	100 µg
Purification :	Protein A affinity purified from an animal origin-free culture supernatant
Content :	1 mg/ml in 50% Glycerol/PBS with 1% BSA and 0.09% sodium azide
Storage condition :	Store at -20°C. Avoid repeated freeze and thaw cycles.

Application Note

Clone RM188 reacts to all Histone H3 proteins, independent of post-translational modifications. No cross reactivity with other histone proteins Western Blot: 0.01 µg/ml - 0.25 µg/ml; ICC: 1 µg/ml - 5 µg/ml; ELISA: 0.2 µg/ml - 1 µg/ml; Multiplex: 0.1 µg/ml - 0.5 µg/ml.

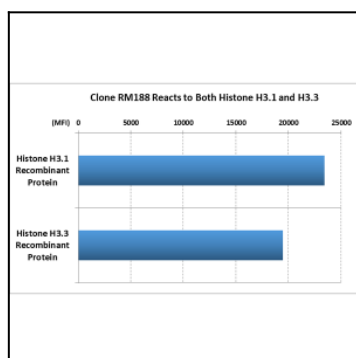


Figure 1: Clone: RM188 reacts to both Histone H3.1 and Histone H3.3.

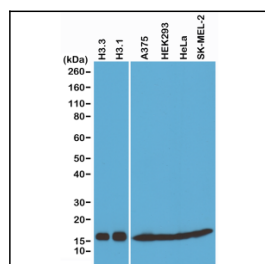


Figure 2: Western Blot of recombinant Histone H3.3 and Histone H3.1 proteins, A375, HEK293, HeLa and SK-MEL-2 whole cell lysates, using Clone: RM188 at 0.025 µg/ml, showed a band of recombinant H3.1 and H3.3 proteins, and total histone H3 in A375, HEK293, HeLa and SK-MEL-2 cells.

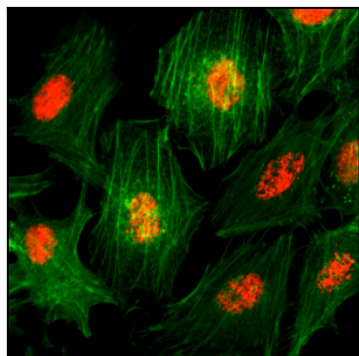


Figure 3: Immunocytochemistry of HeLa cells, using Histone H3 Rabbit mAb Clone: RM188 (red). Actin filaments have been labeled with fluorescein phalloidin (green).

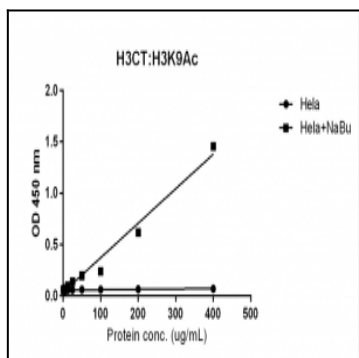


Figure 4: Sandwich ELISA against acetylated histone H3 at Lys 9 using HeLa whole cell lysate, treated or untreated with Sodium Butyrate. Using anti-H3CT (Clone: RM188, 1 µg/ml) as the capture antibody and biotinylated anti-H3K9ac (Clone: RM161, 1 µg/ml) as the detection antibody.

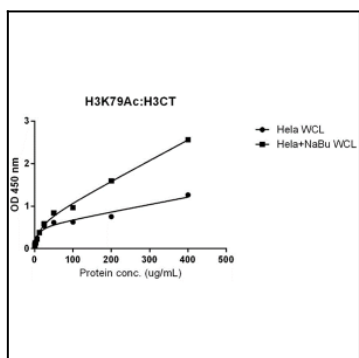


Figure 5: Sandwich ELISA against acetylated histone H3 at Lys 79 using HeLa whole cell lysate, treated or untreated with Sodium Butyrate. Using anti-H3K79ac (Clone: RM156, 5 µg/ml) as the capture antibody and biotinylated anti-H3CT (Clone: RM188, 1 µg/ml) as the detection antibody.