

## 10-9591: Recombinant Rabbit Monoclonal Antibody to Histone H2AZ (Clone: RM215)(Discontinued)

<b>Clonality :</b>	Monoclonal
<b>Clone Name :</b>	RM215
<b>Application :</b>	ELISA,WB,Multiplex
<b>Gene :</b>	H2AFZ
<b>Gene ID :</b>	3015
<b>Uniprot ID :</b>	P0C0S5
<b>Format :</b>	Purified
<b>Alternative Name :</b>	H2AFZ, H2AZ
<b>Isotype :</b>	Rabbit IgG
<b>Immunogen Information :</b>	A peptide corresponding to the C-terminus of human Histone H2AZ

### Product Info

<b>Amount :</b>	100 µg
<b>Purification :</b>	Protein A affinity purified from an animal origin-free culture supernatant
<b>Content :</b>	1 mg/ml in 50% Glycerol/PBS with 1% BSA and 0.09% sodium azide
<b>Storage condition :</b>	Store at -20°C. Avoid repeated freeze and thaw cycles.

### Application Note

Clone RM215 reacts to Histone H2AZ protein, independent of post-translational modifications. No cross reactivity with other histone proteins. . Western Blot: 0.1 µg/ml - 0.5 µg/ml; ICC: 1 µg/ml - 2 µg/ml; ELISA: 0.1 µg/ml - 1 µg/ml; Multiplex: 0.1 µg/ml - 1 µg/ml.

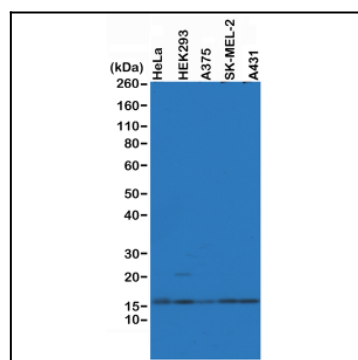


Figure 1: Western Blot of A375, HEK293, HeLa and SK-MEL-2 whole cell lysates, using Clone: RM215 at 0.5 µg/ml, showed endogenous Histone H2AZ in A375, HEK293, HeLa and SK-MEL-2 cells.

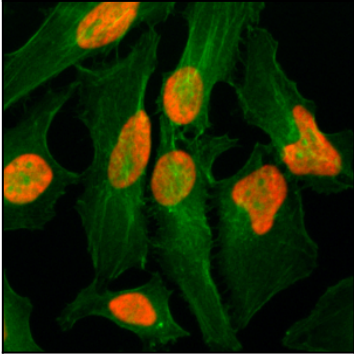


Figure 2: Immunocytochemistry of HeLa cells, using Anti-Histone H2AZ Rabbit mAb Clone: RM215 (red). Actin filaments have been labeled with fluorescein phalloidin (green).