

10-9587: Recombinant Rabbit Monoclonal Antibody to Core Histone Macro H2A.1 (H2AFY) (Clone: RM248)(Discontinued)

| | |
|--------------------------------|---|
| Clonality : | Monoclonal |
| Clone Name : | RM248 |
| Application : | ELISA,WB,Multiplex |
| Reactivity : | Human |
| Gene : | H2afy |
| Gene ID : | 26914 |
| Uniprot ID : | Q9QZQ8 |
| Format : | Purified |
| Alternative Name : | H2A/y, H2A/y |
| Isotype : | Rabbit IgG |
| Immunogen Information : | A peptide corresponding to the C-terminus of human Histone macroH2A1. |

Product Info

| | |
|----------------------------|--|
| Amount : | 100 µg |
| Purification : | Protein A affinity purified from an animal origin-free culture supernatant |
| Content : | 1 mg/ml in 50% Glycerol/PBS with 1% BSA and 0.09% sodium azide |
| Storage condition : | Store at -20°C. Avoid repeated freeze and thaw cycles. |

Application Note

Clone RM248 reacts to the Core histone macro-H2A.1 (Histone macroH2A1) protein, independent of post-translational modifications. No cross reactivity with other histone proteins. Western Blot: 0.5 µg/ml - 2 µg/ml; ICC: 1 µg/ml - 2 µg/ml; ELISA: 0.2 µg/ml - 1 µg/ml; Multiplex: 0.2 µg/ml - 1 µg/ml.

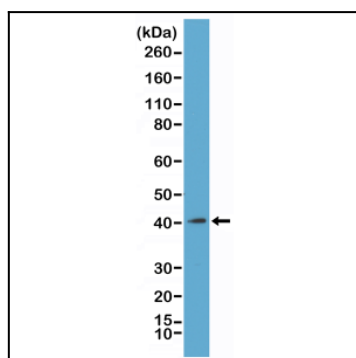


Figure 1: Western Blot of acid extracts from K562 cells, using Clone: RM248 at 1 µg/ml.

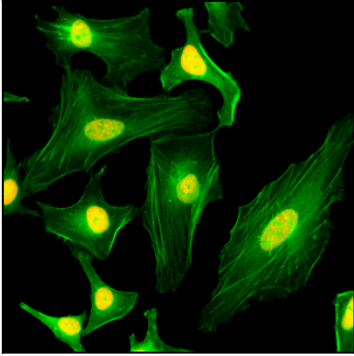


Figure 2: Immunocytochemistry of HeLa cells, using anti-Histone macro H2A1 Rabbit mAb Clone: RM248 (red). Actin filaments have been labeled with fluorescein phalloidin (green).