

10-9578: Recombinant Rabbit Monoclonal Antibody to Monomethylated Histone H4 Lysine 20 (Clone: RM208)(Discontinued)

Clonality :	Monoclonal
Clone Name :	RM208
Application :	WB,ELISA,Multiplex
Reactivity :	All Species
Gene :	HIST1H4A
Gene ID :	121504
Uniprot ID :	P62805
Format :	Purified
Alternative Name :	H4/A, H4FA
Isotype :	Rabbit IgG
Immunogen Information :	A trimethyl-peptide corresponding to trimethyl-Histone H4 (Lys20)

Product Info

Amount :	100 µg
Purification :	Protein A affinity purified from an animal origin-free culture supernatant
Content :	1 mg/ml in 50% Glycerol/PBS with 1% BSA and 0.09% sodium azide
Storage condition :	Store at -20°C. Avoid repeated freeze and thaw cycles.

Application Note

Clone RM208 reacts to Histone H4 trimethylated at Lysine 20 (K20me3). It may slightly cross react to dimethylated Lysine 20 (K20me2) at a higher concentration. No cross reactivity with non-modified Lysine 20, monomethylated Lysine 20 (K20me1), or other methylations in histone H4. Western Blot: 1 Åµg/ml Å 2 Åµg/ml; ELISA: 0.5 Åµg/ml - 1 Åµg/ml; Multiplex: 0.1 Åµg/ml Å 0.5 Åµg/ml.

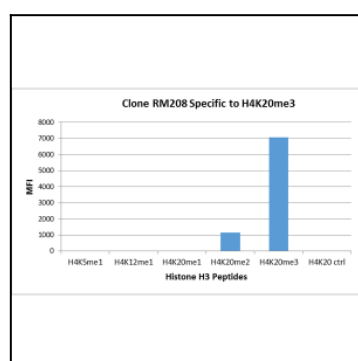


Figure 1: Clone: RM208 specifically reacts to Histone H4 trimethylated at Lysine 20 (K20me3). May slightly cross react to dimethylated Lysine 20 (K20me2) at higher concentrations. No crossreactivity with non-modified Lysine 20, monomethylated Lysine 20 (K20me1), or other methylations in histone H4.

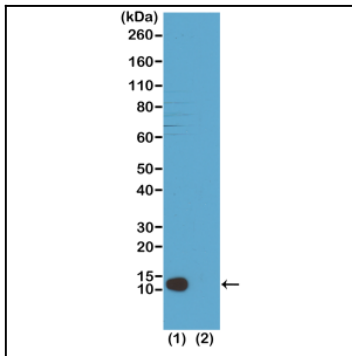


Figure 2: Western Blot of (1) acid extracts of HeLa cells; (2) recombinant Histone H4. Using Clone: RM208 at 1 $\mu\text{g/ml}$, showed a band of Histone H4 trimethylated at Lysine20 in HeLa cells.