

10-9572: Recombinant Rabbit Monoclonal Antibody to Phospho-Histone H3 (Ser10) (Clone: RM163)(Discontinued)

Clonality :	Monoclonal
Clone Name :	RM163
Application :	WB,ELISA,Multiplex,ICC
Reactivity :	All Species
Gene :	H3F3A
Gene ID :	3020
Uniprot ID :	P84243
Format :	Purified
Alternative Name :	Histone H3.3
Isotype :	Rabbit IgG
Immunogen Information :	A phospho-peptide corresponding to Phospho-Histone H3 (Ser10)

Product Info

Amount :	100 µg
Purification :	Protein A affinity purified from an animal origin-free culture supernatant
Content :	1 mg/ml in 50% Glycerol/PBS with 1% BSA and 0.09% sodium azide
Storage condition :	Store at -20°C. Avoid repeated freeze and thaw cycles.

Application Note

Clone RM163 reacts to Histone H3 phosphorylated at Serine 10. No cross reactivity with other phosphorylated histones. Western Blot: 0.5 µg/ml - 2 µg/ml; ICC: 0.5 µg/ml - 2 µg/ml; ELISA: 0.2 µg/ml - 1 µg/ml; Multiplex: 0.1 µg/ml - 1 µg/ml.

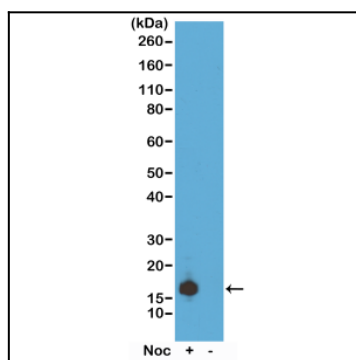


Figure 1: Western Blot of acid extracts of HeLa cells treated or non-treated with Nocodazole. Using Clone: RM163 at 0.5 µg/ml, showed a band of Histone H3 phospho-rylated at serine 10 in HeLa cells.

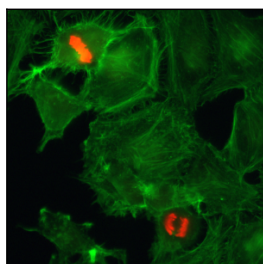


Figure 2: Immunocytochemistry of HeLa cells using Phospho-Histone H3(Ser10) Rabbit mAb Clone: RM163 (red). Actin filaments have been labeled with fluorescein phalloidin (green).