

10-9559: Recombinant Rabbit Monoclonal Antibody to Dimethylated Histone H3 Lysine 23, H3K23me2 (Clone: RM171)(Discontinued)

Clonality :	Monoclonal
Clone Name :	RM171
Application :	WB,ELISA,Multiplex
Reactivity :	All Species
Gene :	H3F3A
Gene ID :	3020
Uniprot ID :	P84243
Format :	Purified
Alternative Name :	Histone H3.3
Isotype :	Rabbit IgG
Immunogen Information :	A dimethyl-peptide corresponding to Dimethyl-Histone H3 (Lys23).

Product Info

Amount :	100 µg
Purification :	Protein A affinity purified from an animal origin-free culture supernatant
Content :	1 mg/ml in 50% Glycerol/PBS with 1% BSA and 0.09% sodium azide
Storage condition :	Store at -20°C. Avoid repeated freeze and thaw cycles.

Application Note

Clone RM171 reacts to Histone H3 dimethylated at Lysine 23 (K23me2). No cross reactivity with nonmodified Lysine 23, monomethylated Lysine 23 (K23me1), or other methylations in histone H3. Western Blot: 0.5 µg/ml - 2 µg/ml; ELISA: 0.1 µg/ml - 0.5 µg/ml; Multiplex: 0.1 µg/ml - 0.5 µg/ml.

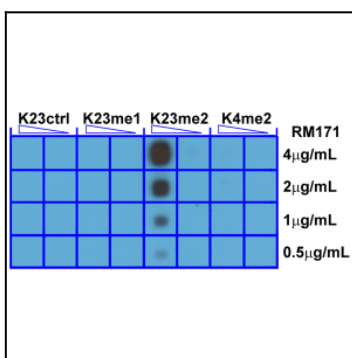


Figure 1: A Peptide dotblot shows Clone: RM171 only reacts to Histone. H3 dimethyl-Lysine 23 (K23me2). No cross reactivity. with nonmodified Lysine 23 (K23Ctrl), monomethylated. Lysine 23 (K23me1), or dimethylated Lysine 4 (K4me2).

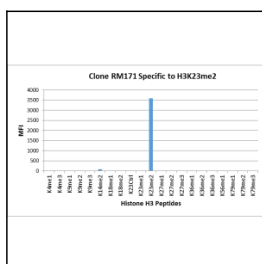


Figure 2: Clone: RM171 specifically reacts to Histone H3 dimethylated at Lysine 23 (K23me2). No cross reactivity with other methylated lysines in Histone H3.

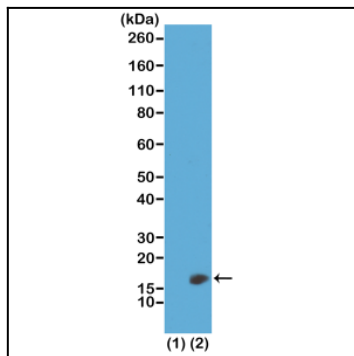


Figure 3: Western Blot of recombinant histone H3.3 (1) and acid extracts of HeLa cells (2), using Clone: RM171 at 0.5 $\mu\text{g/ml}$, showed a band of histone H3 dimethylated at Lysine 23 (K23me₂) in HeLa cells.